

Stock Market Indicators: 200-Day Moving Averages

Yardeni Research, Inc.

December 30, 2023

Dr. Ed Yardeni

516-972-7683
eyardeni@yardeni.com

Joe Abbott

jabbott@yardeni.com

Debbie Johnson

480-664-1333
djohnson@yardeni.com

Mali Quintana

480-664-1333
aquintana@yardeni.com

Please visit our sites at
www.yardeni.com
blog.yardeni.com



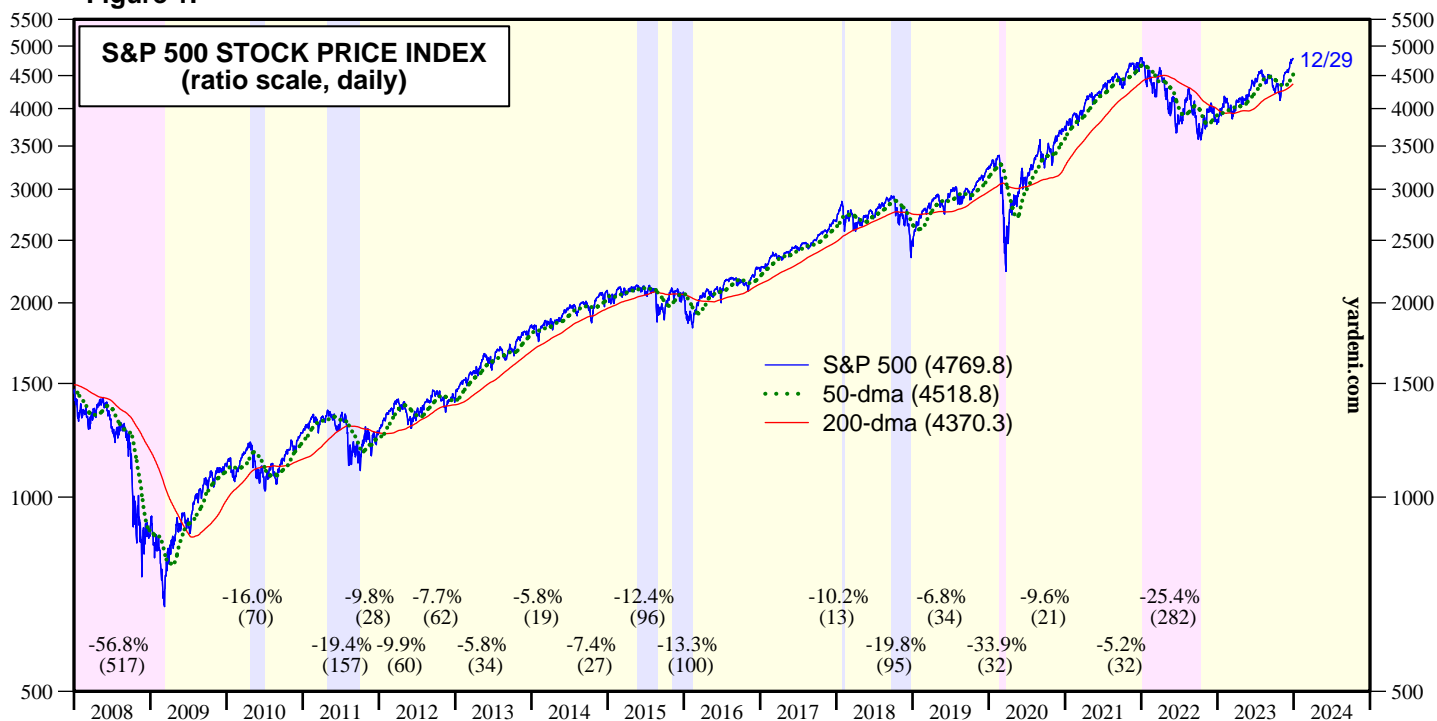
thinking outside the box

Table Of Contents

S&P 500 Moving Averages	1-5
S&P 500 Sectors Stock Price Index & 200-dma	6
S&P 500 Sectors Stock Price Index Versus 200-dma	7
200-Day Moving Averages	8-19

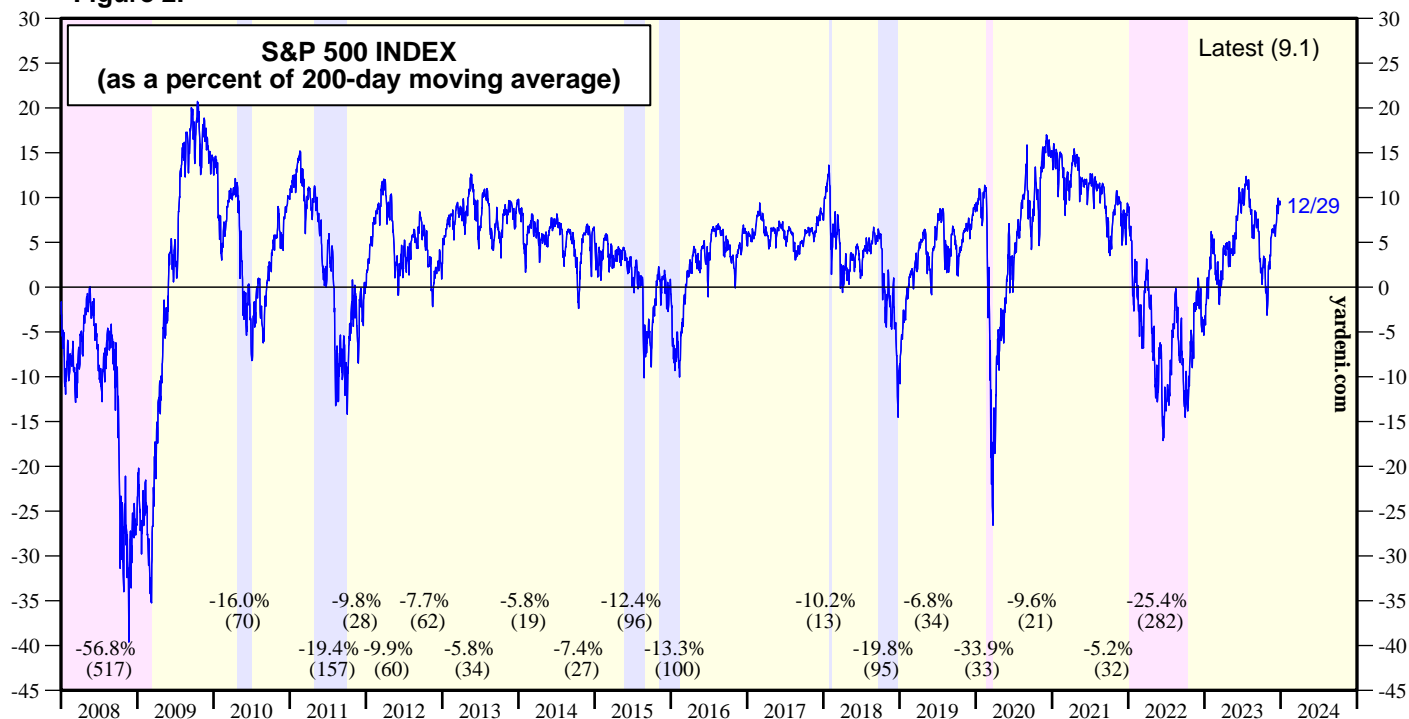
S&P 500 Moving Averages

Figure 1.



Note: Corrections are declines of 10% or more, but less than 20%, while minor ones are 5%-10% (all in blue shades). Bear markets are declines of 20% or more (in red shades). Number of calendar days in parentheses.
Source: Standard & Poor's.

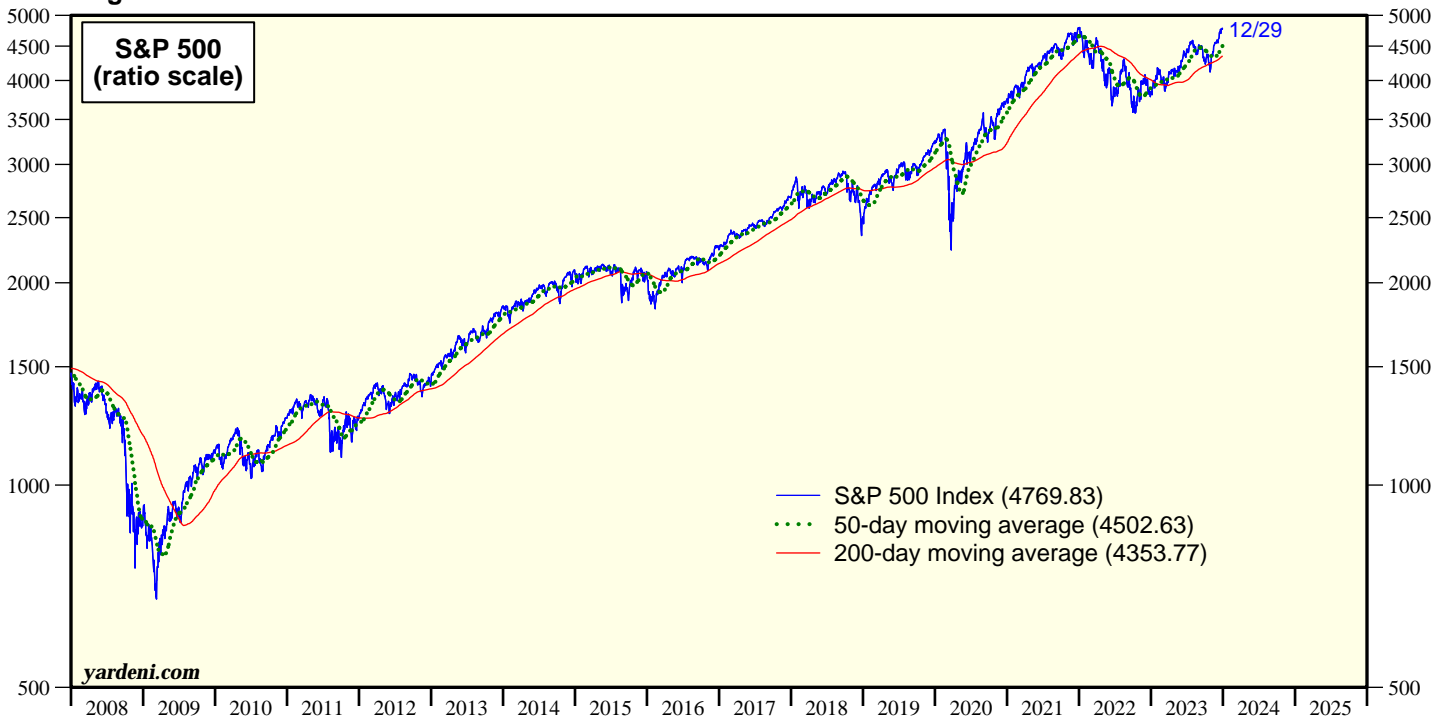
Figure 2.



Note: Corrections are declines of 10% or more, while minor ones are 5%-10% (all in blues shades). Bear markets are declines of 20% or more (in red shades). Number of calendar days in parentheses.
Source: Standard & Poor's.

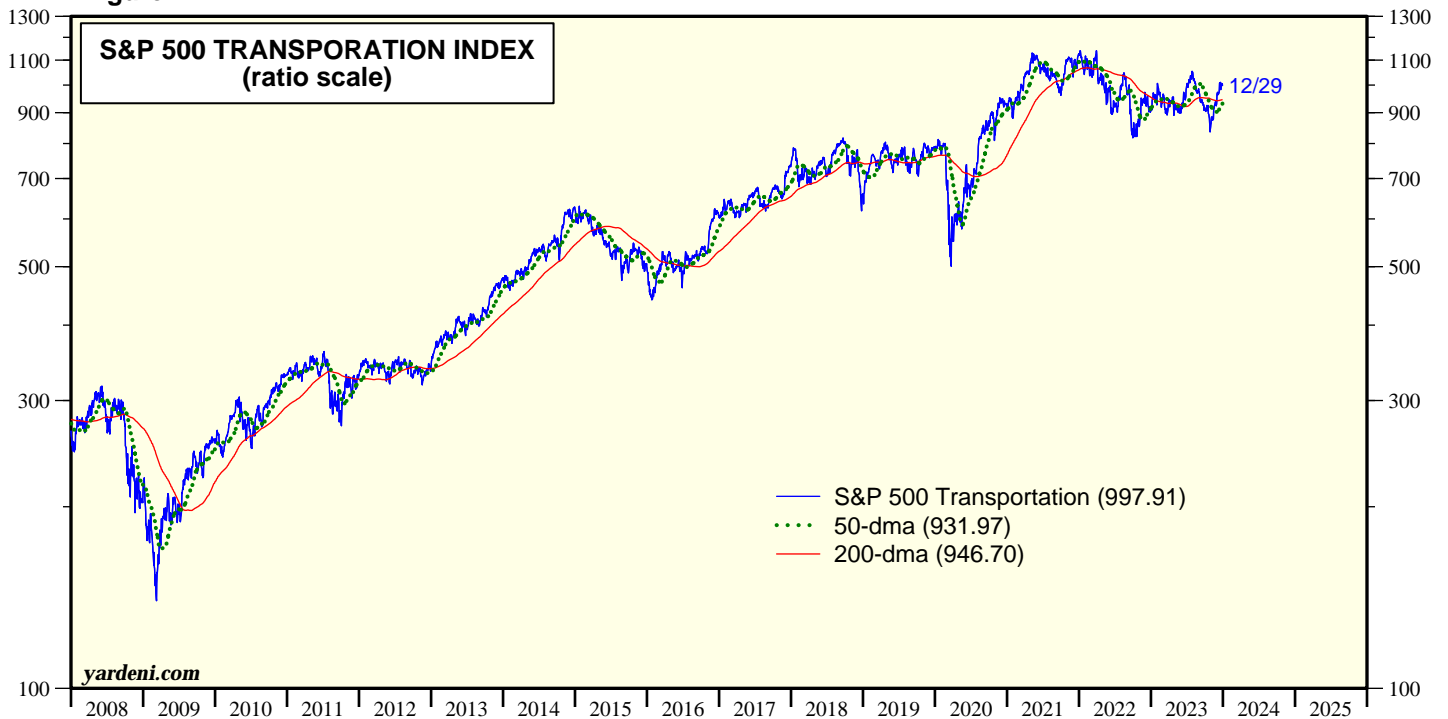
S&P 500 Moving Averages

Figure 3.



Source: Standard & Poor's.

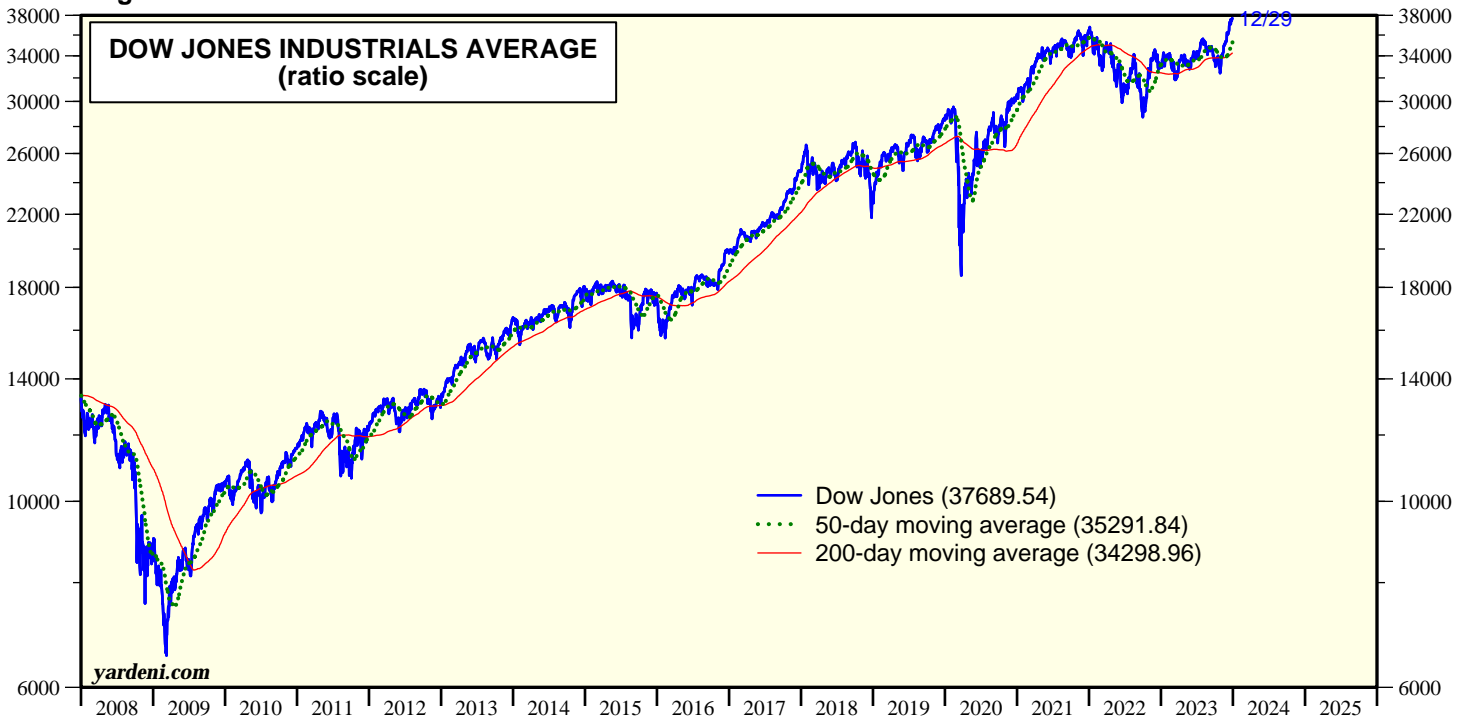
Figure 4.



Source: Standard & Poor's Corporation.

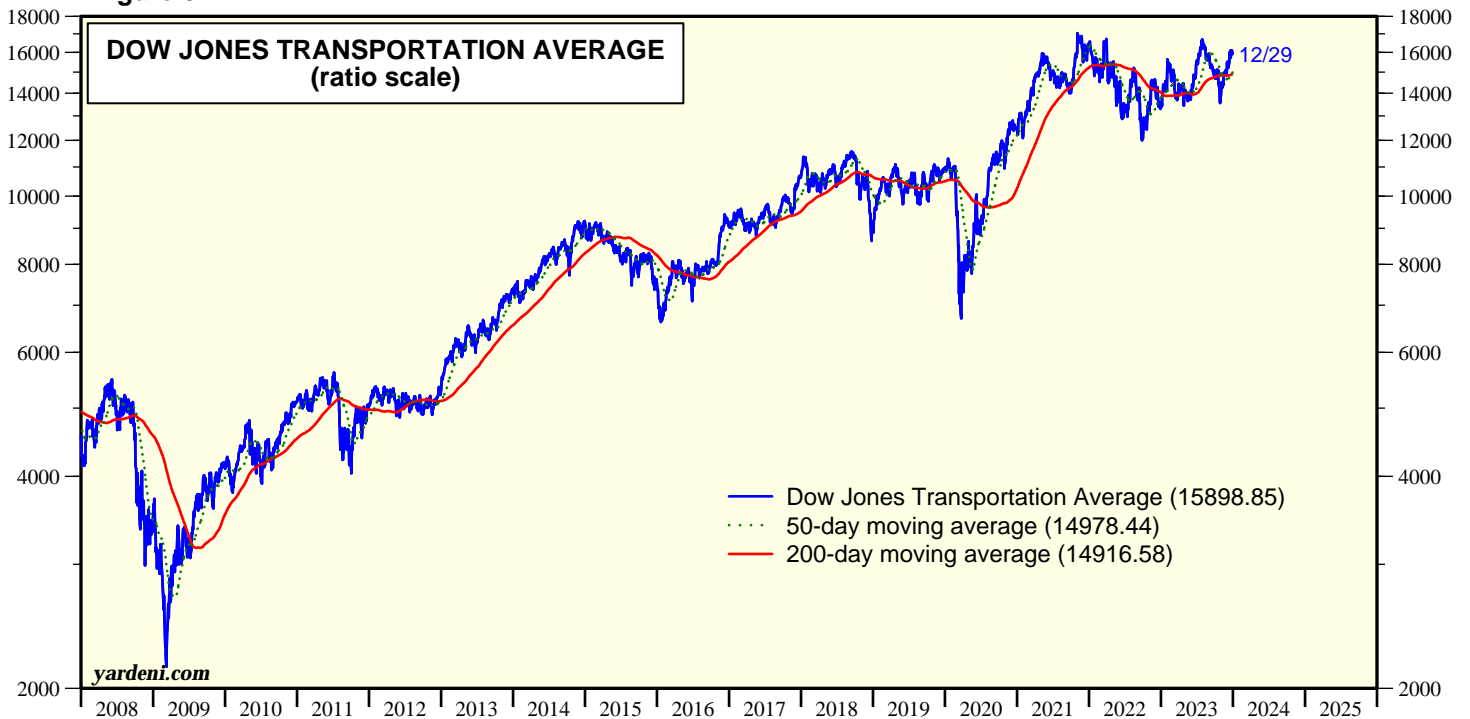
S&P 500 Moving Averages

Figure 5.



Source: Haver Analytics.

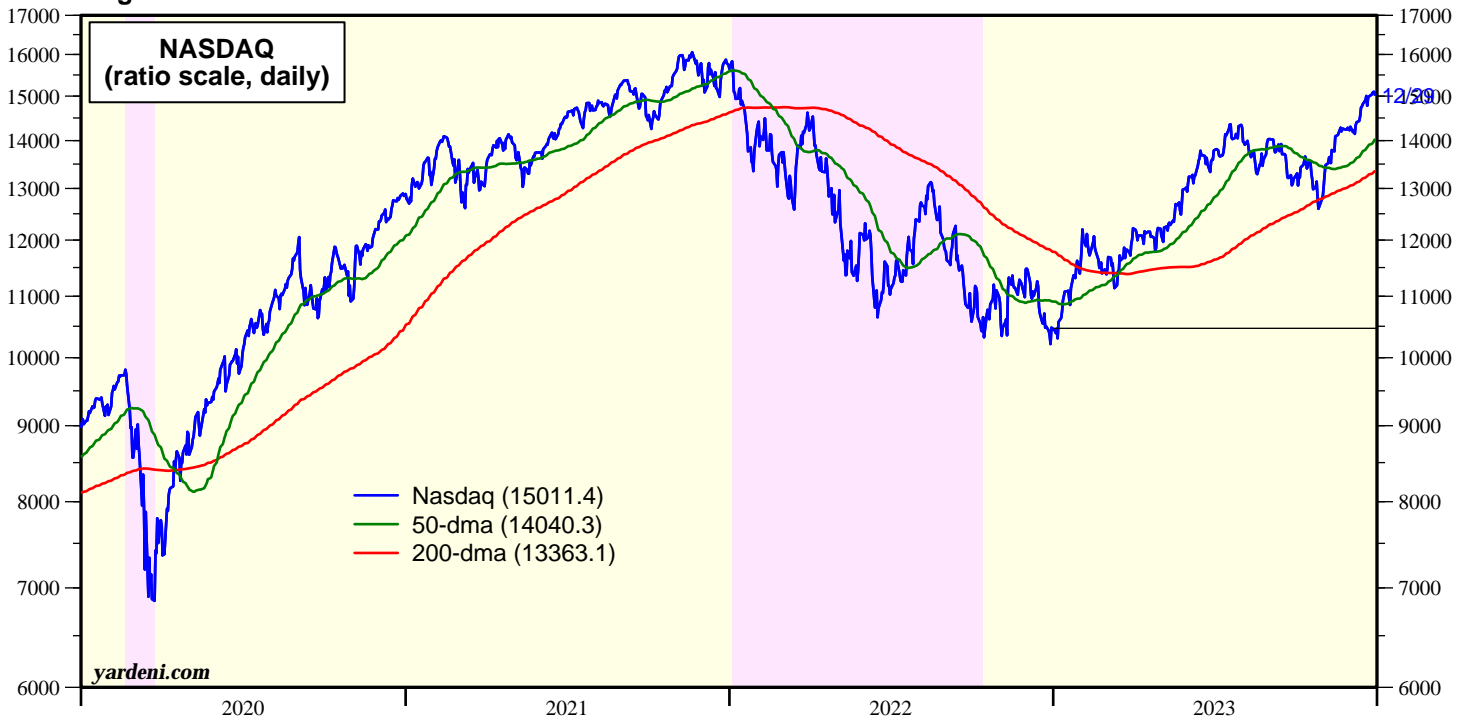
Figure 6.



Source: Haver Analytics.

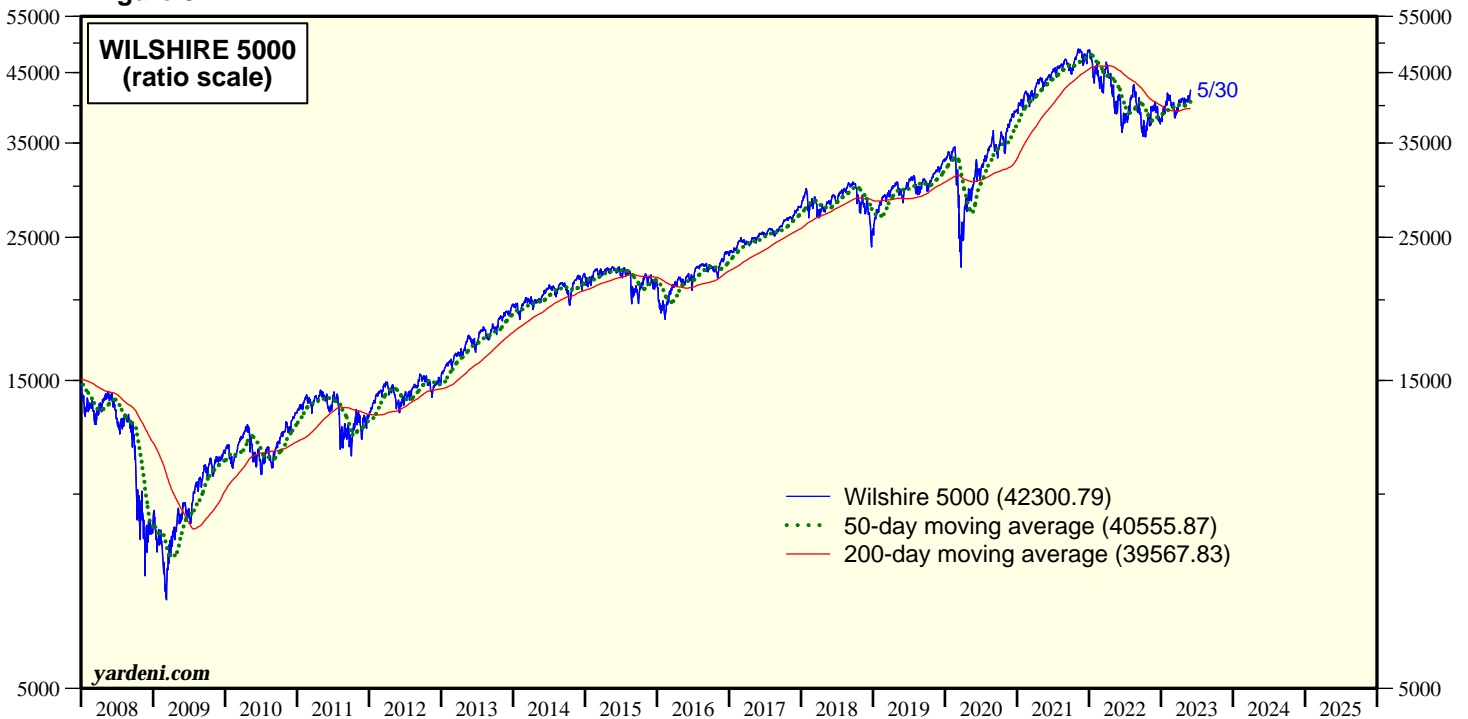
S&P 500 Moving Averages

Figure 7.



Note: Shaded red areas are S&P 500 bear market declines of 20% or more. Yellow areas show bull markets.
Source: Haver Analytics.

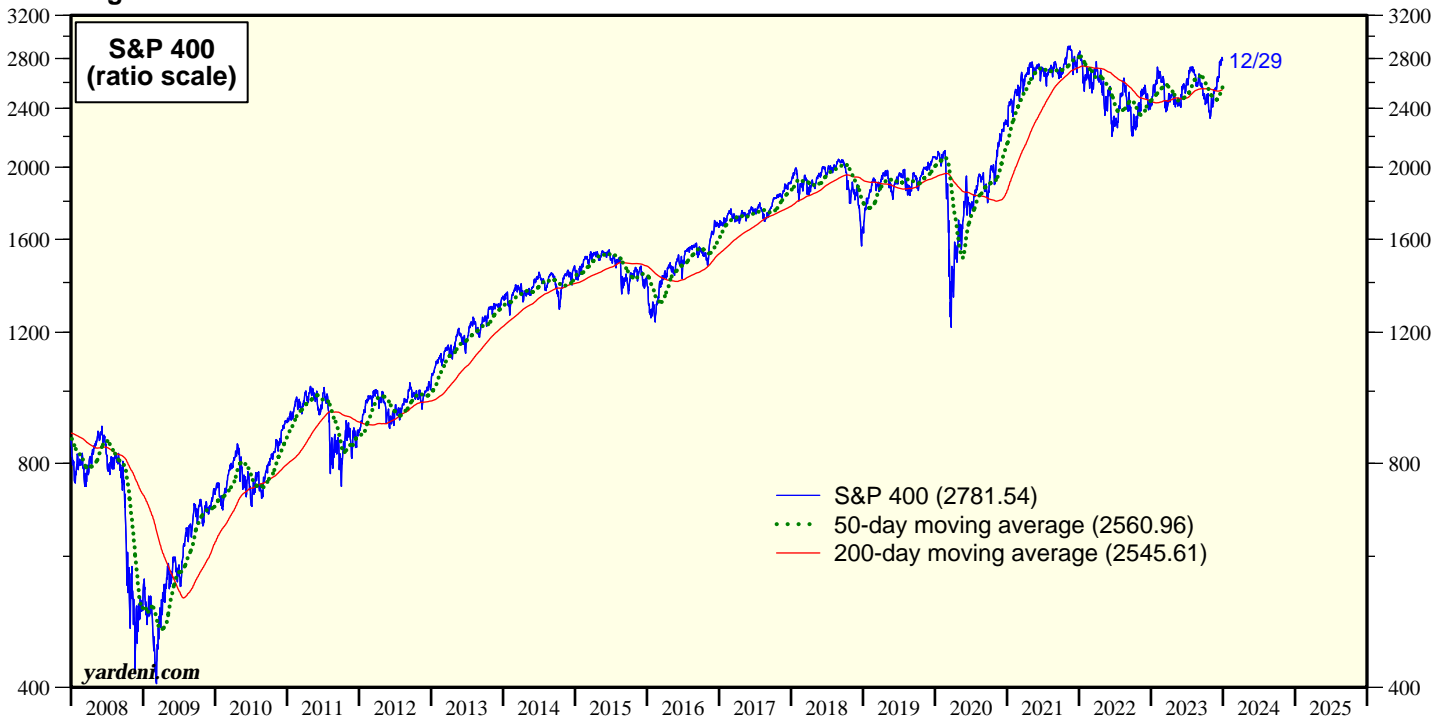
Figure 8.



Source: Haver Analytics.

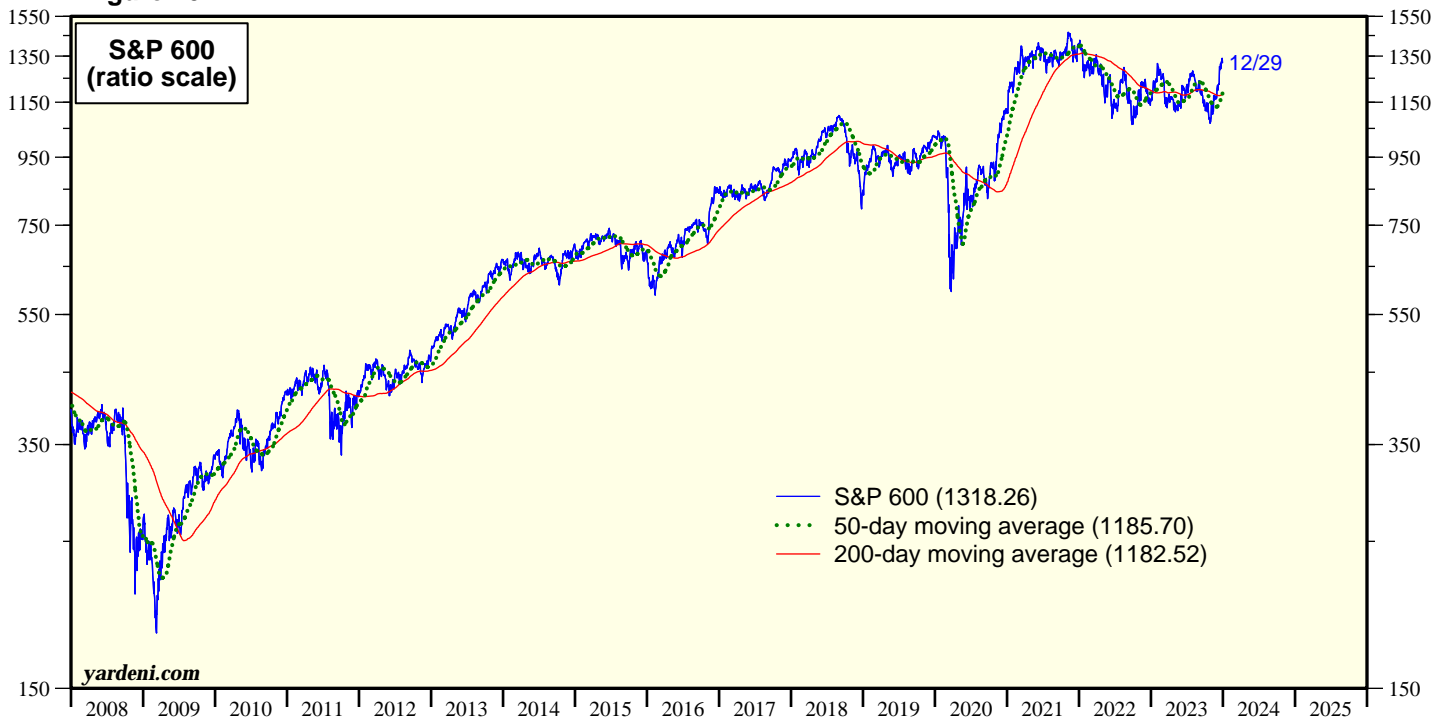
S&P 500 Moving Averages

Figure 9.



Source: Standard & Poor's.

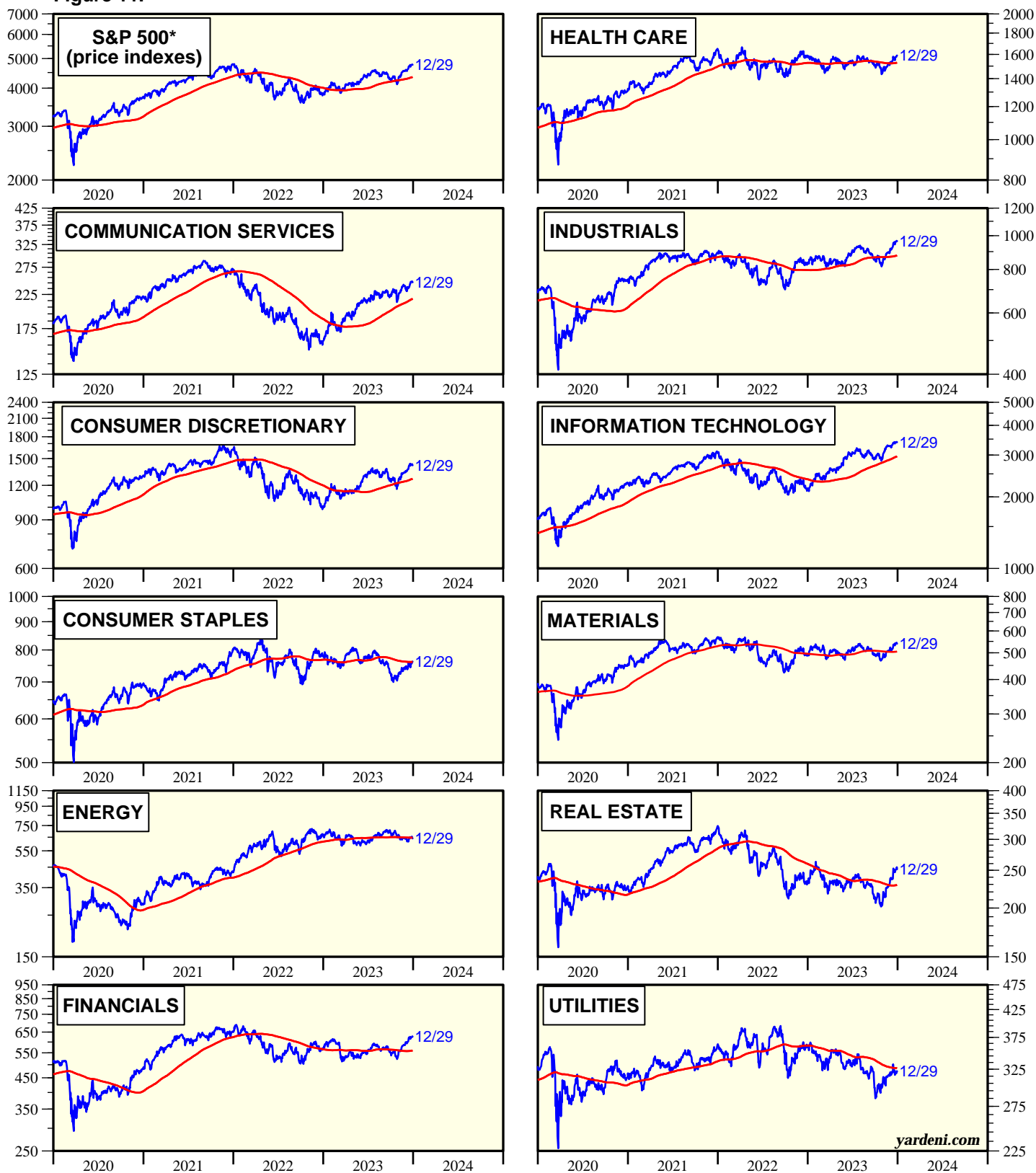
Figure 10.



Source: Standard & Poor's.

S&P 500 Sectors Stock Price Index & 200-dma

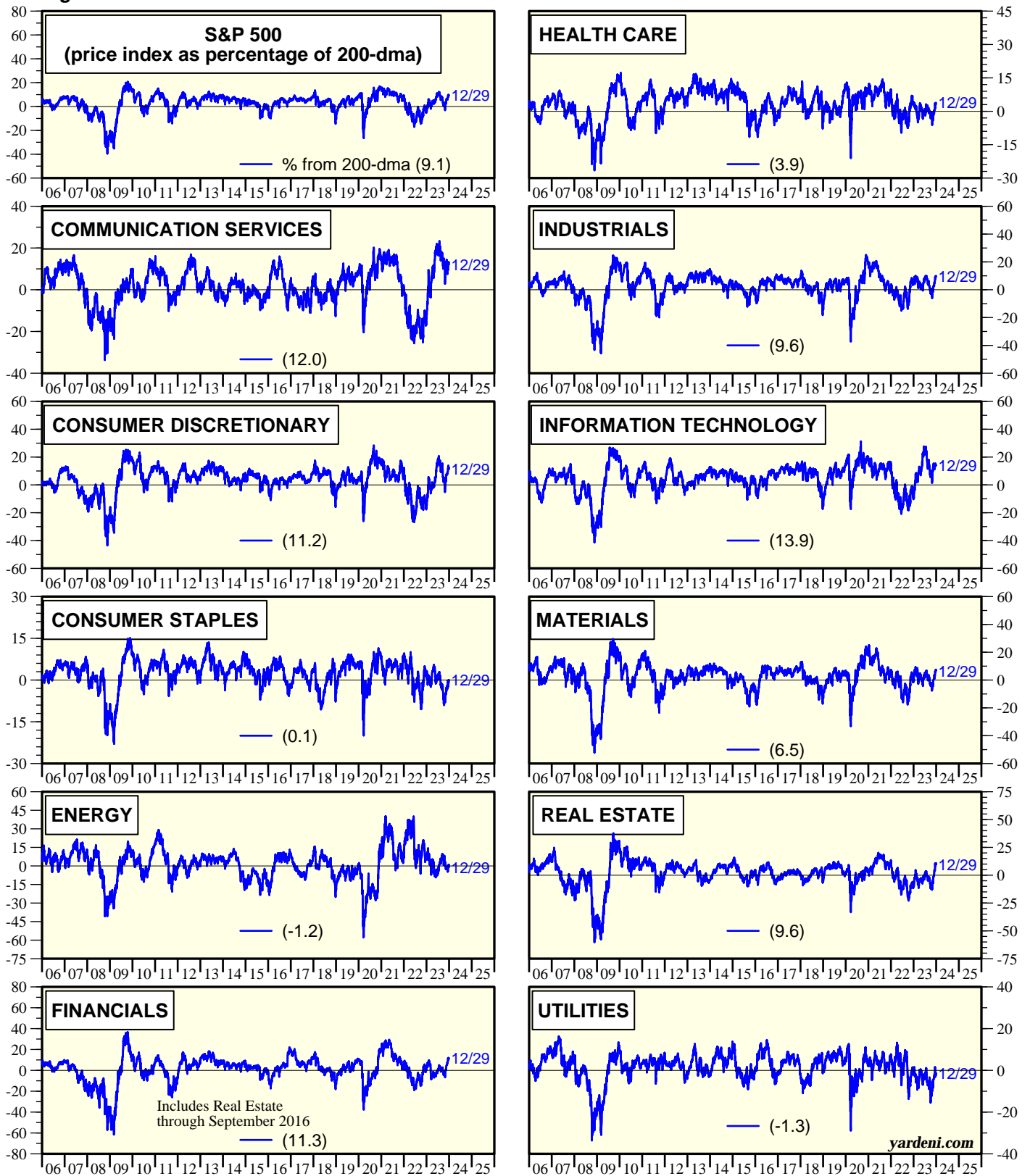
Figure 11.



— 200-day moving average
 * S&P 500 sector price indexes on ratio scales.
 Source: Haver Analytics and Standard & Poor's.

S&P 500 Sectors Stock Price Index Versus 200-dma

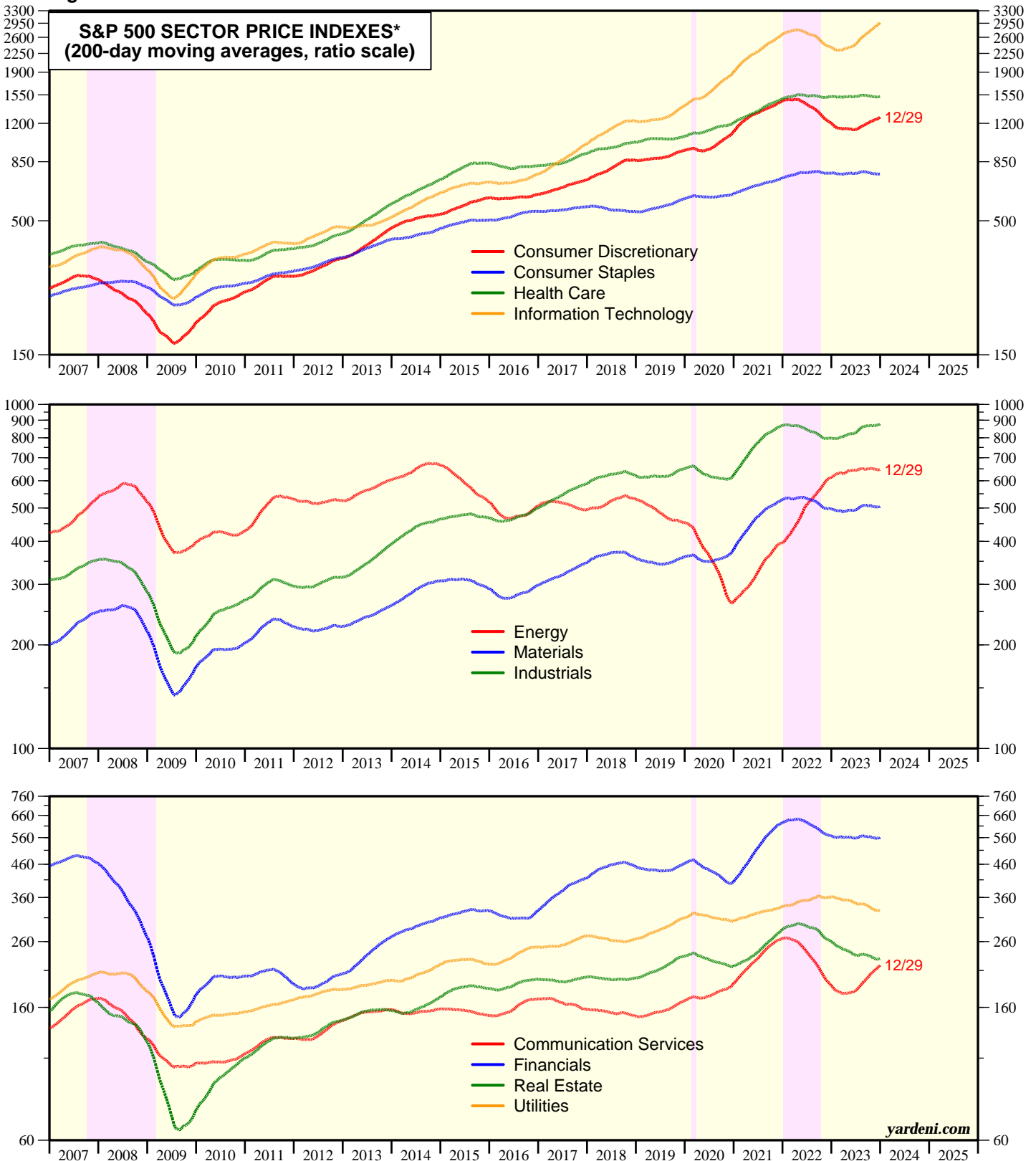
Figure 12.



Source: Standard & Poor's.

200-Day Moving Averages

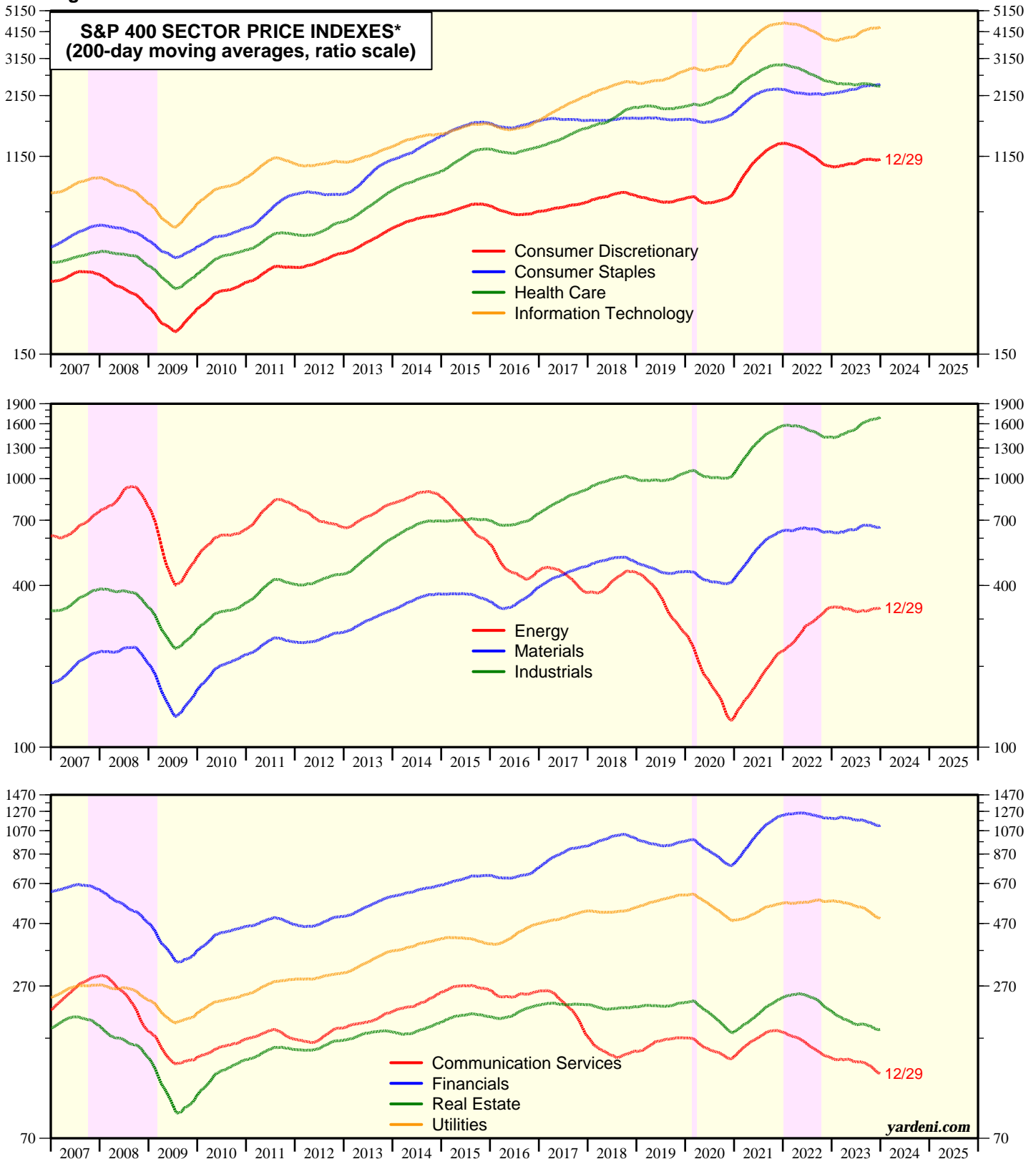
Figure 13.



Note: Shaded red areas denote S&P 500 bear market declines of 20% or more. Yellow areas show bull markets.
Source: Standard & Poor's.

200-Day Moving Averages

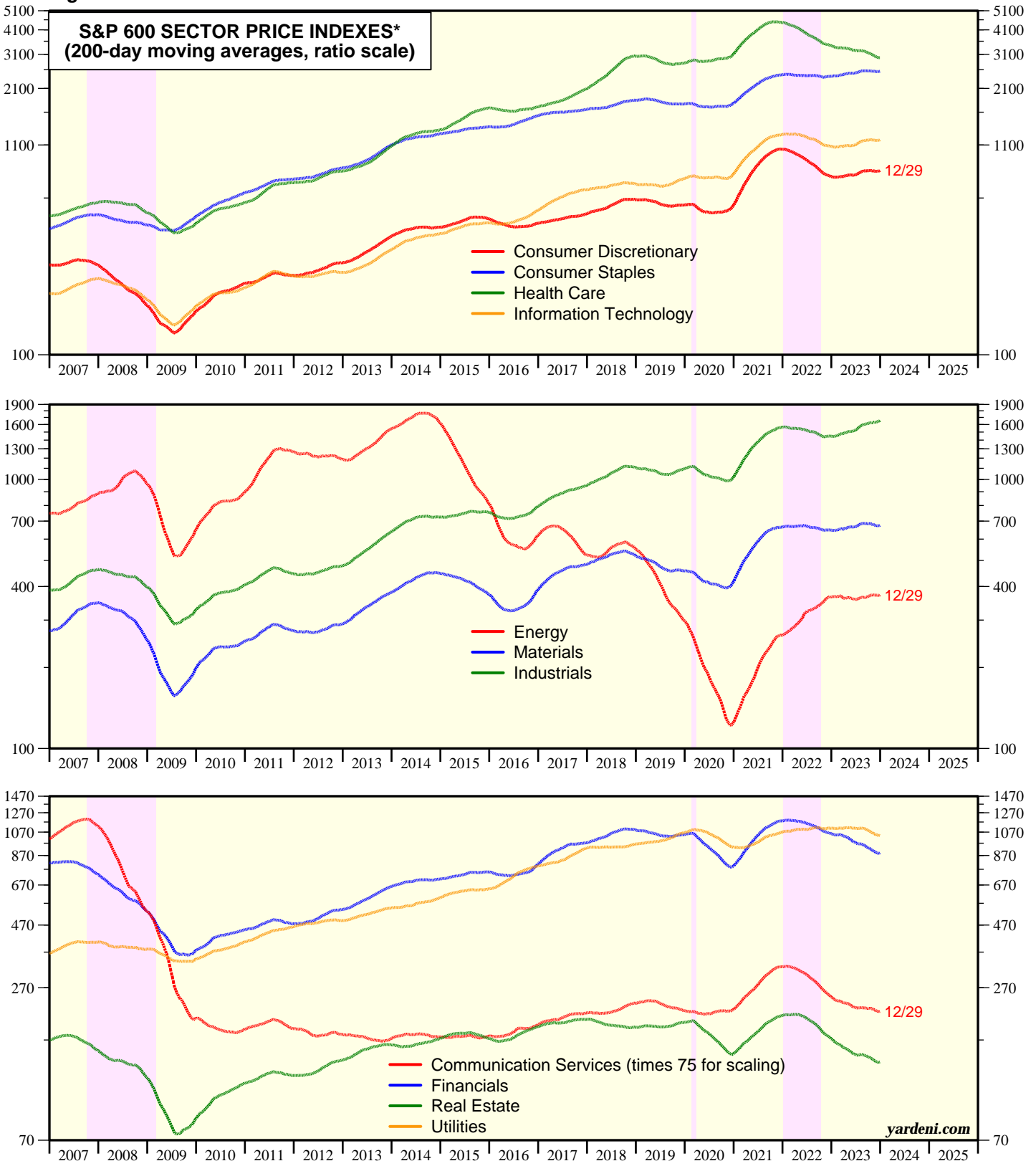
Figure 14.



Note: Shaded red areas are S&P 500 bear market declines of 20% or more. Yellow areas show bull markets.
Source: Standard & Poor's.

200-Day Moving Averages

Figure 15.



Note: Shaded red areas denote S&P 500 bear market declines of 20% or more. Yellow areas show bull markets.
Source: Standard & Poor's.

200-Day Moving Averages

Figure 16.

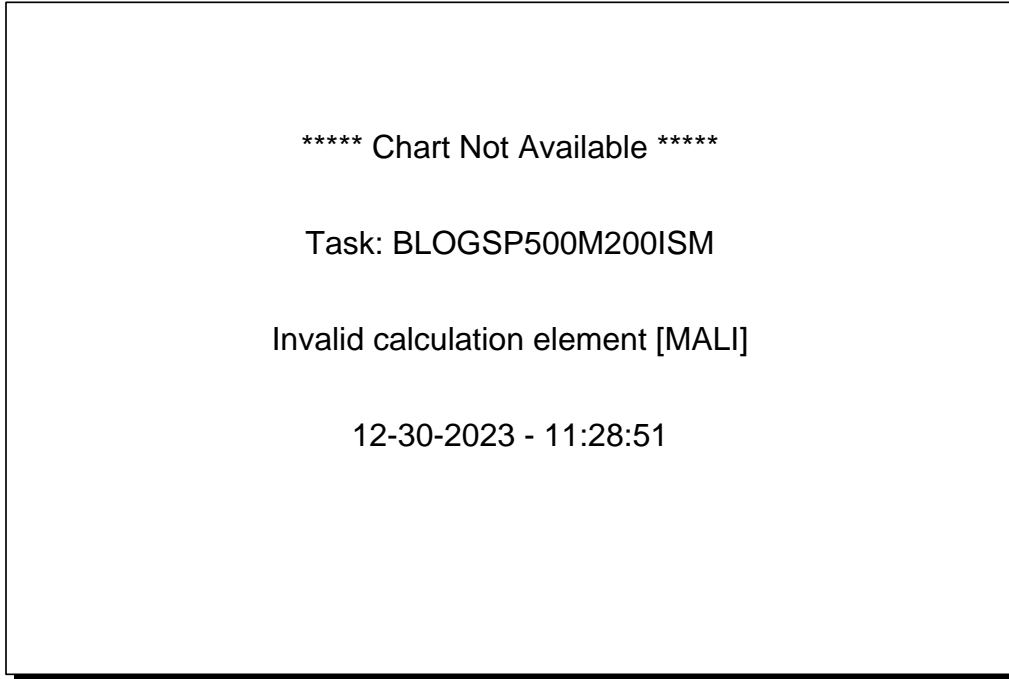
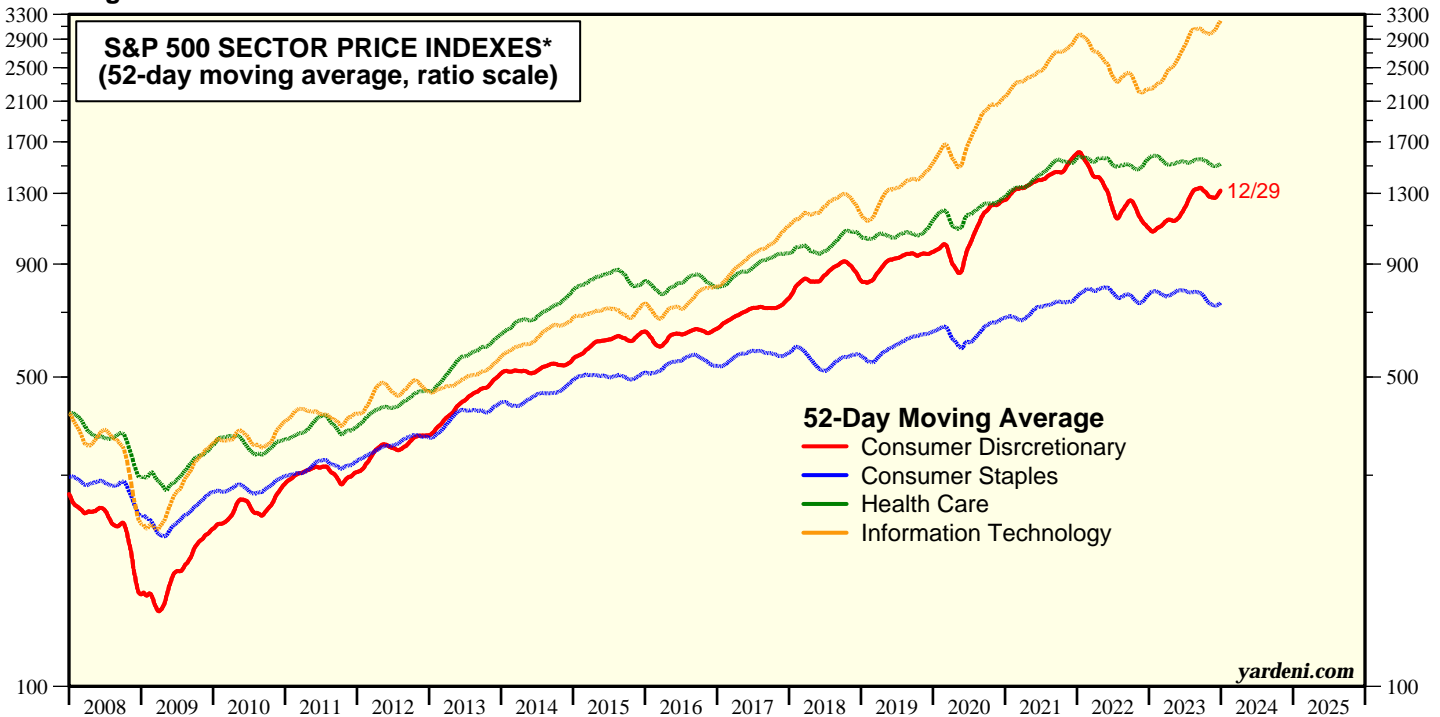


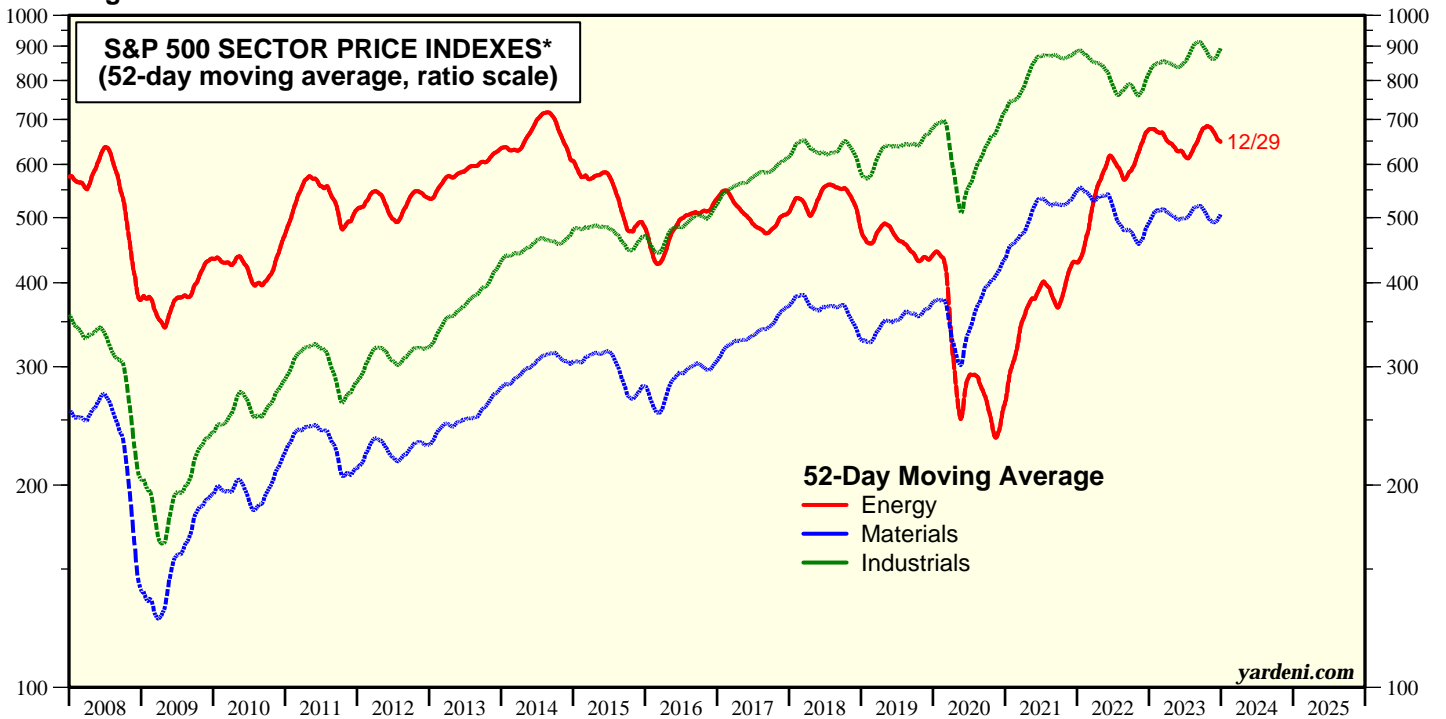
Figure 17.



* S&P 500 sector price indexes on ratio scales.
Source: Standard & Poor's.

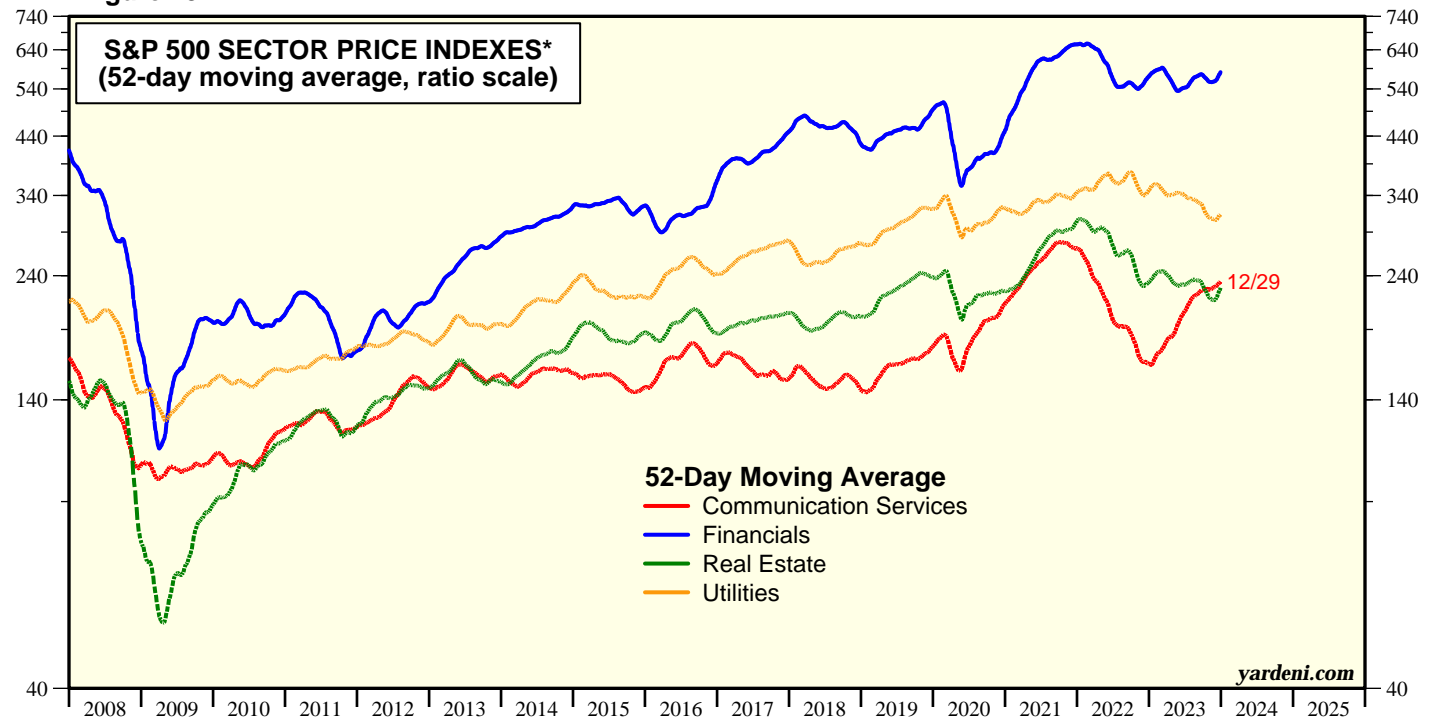
200-Day Moving Averages

Figure 18.



* S&P 500 sector price indexes on ratio scales.
Source: Standard & Poor's.

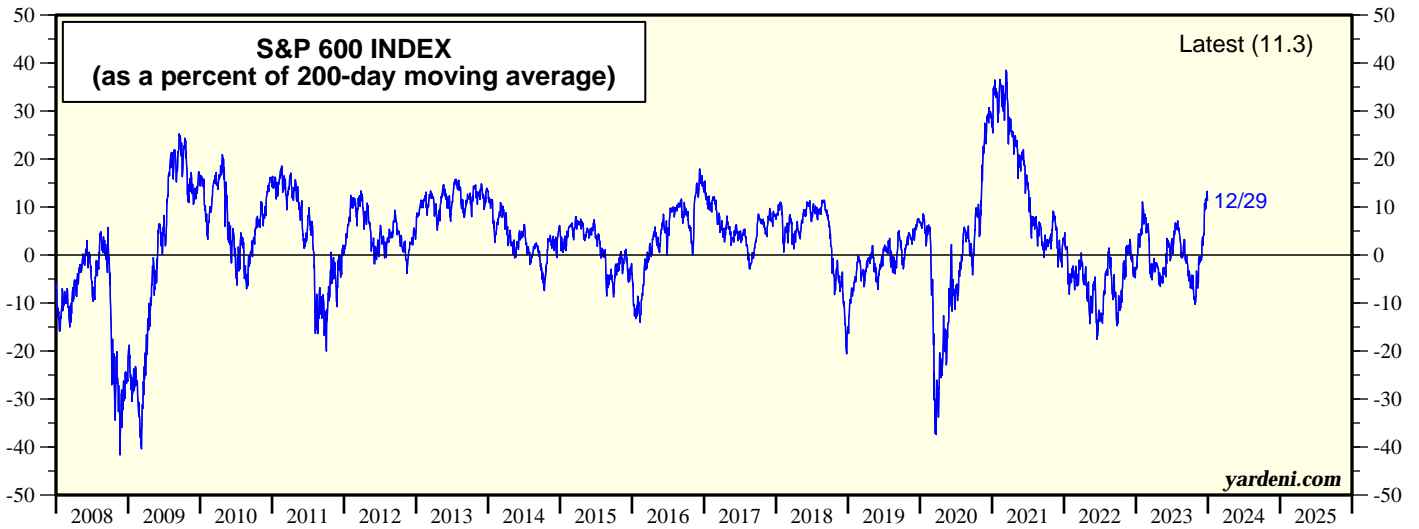
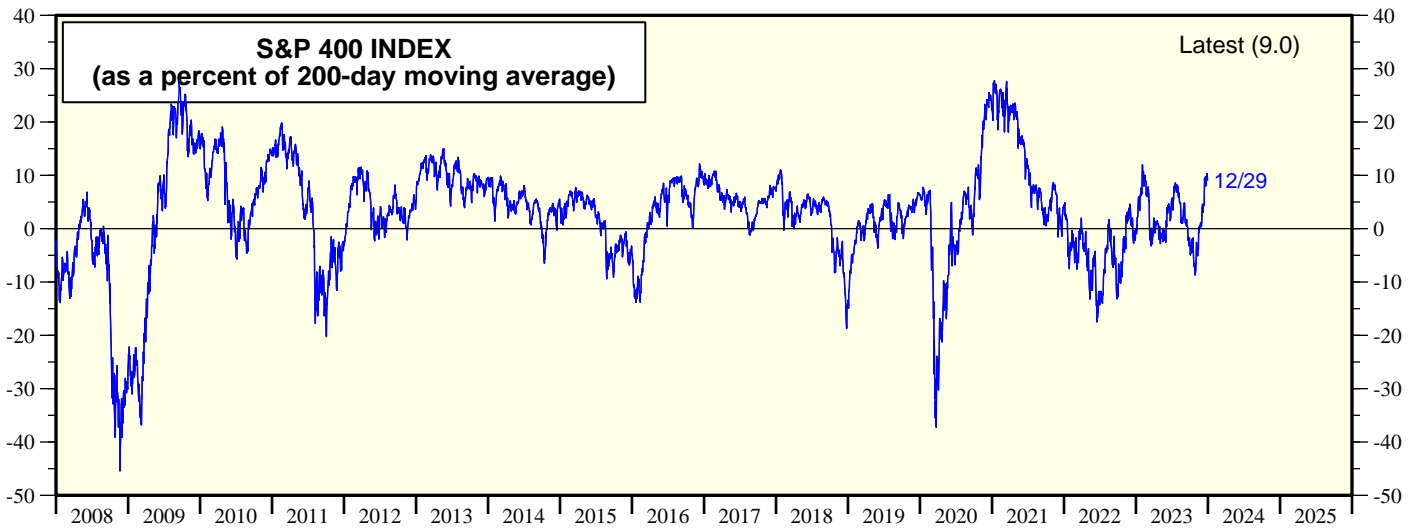
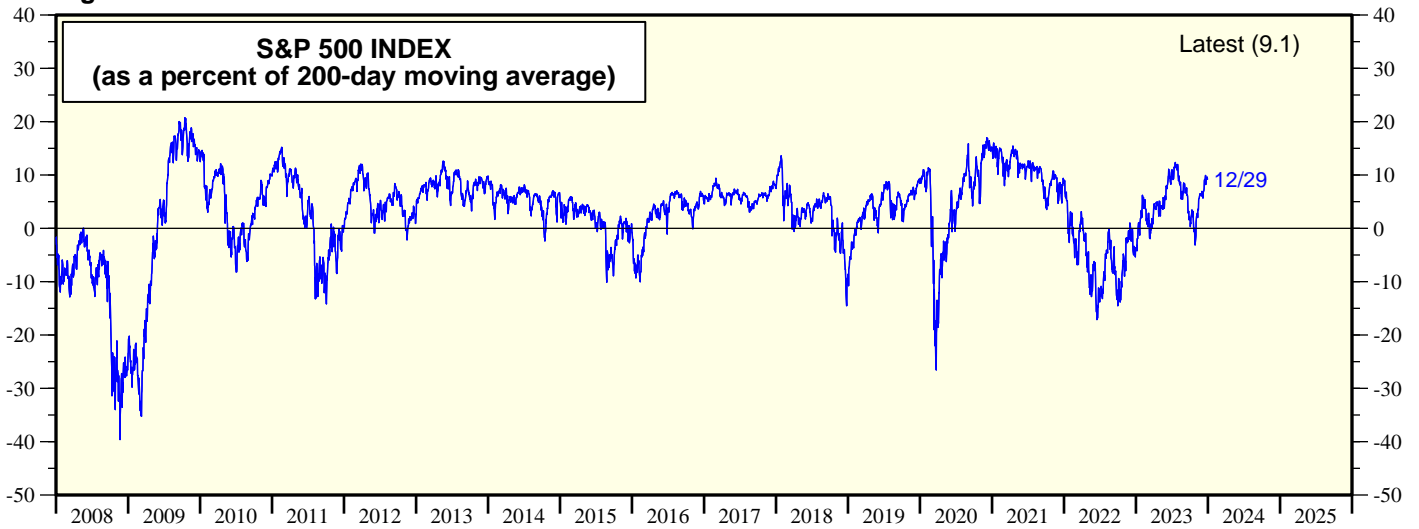
Figure 19.



* S&P 500 sector price indexes on ratio scales.
Source: Standard & Poor's.

200-Day Moving Averages

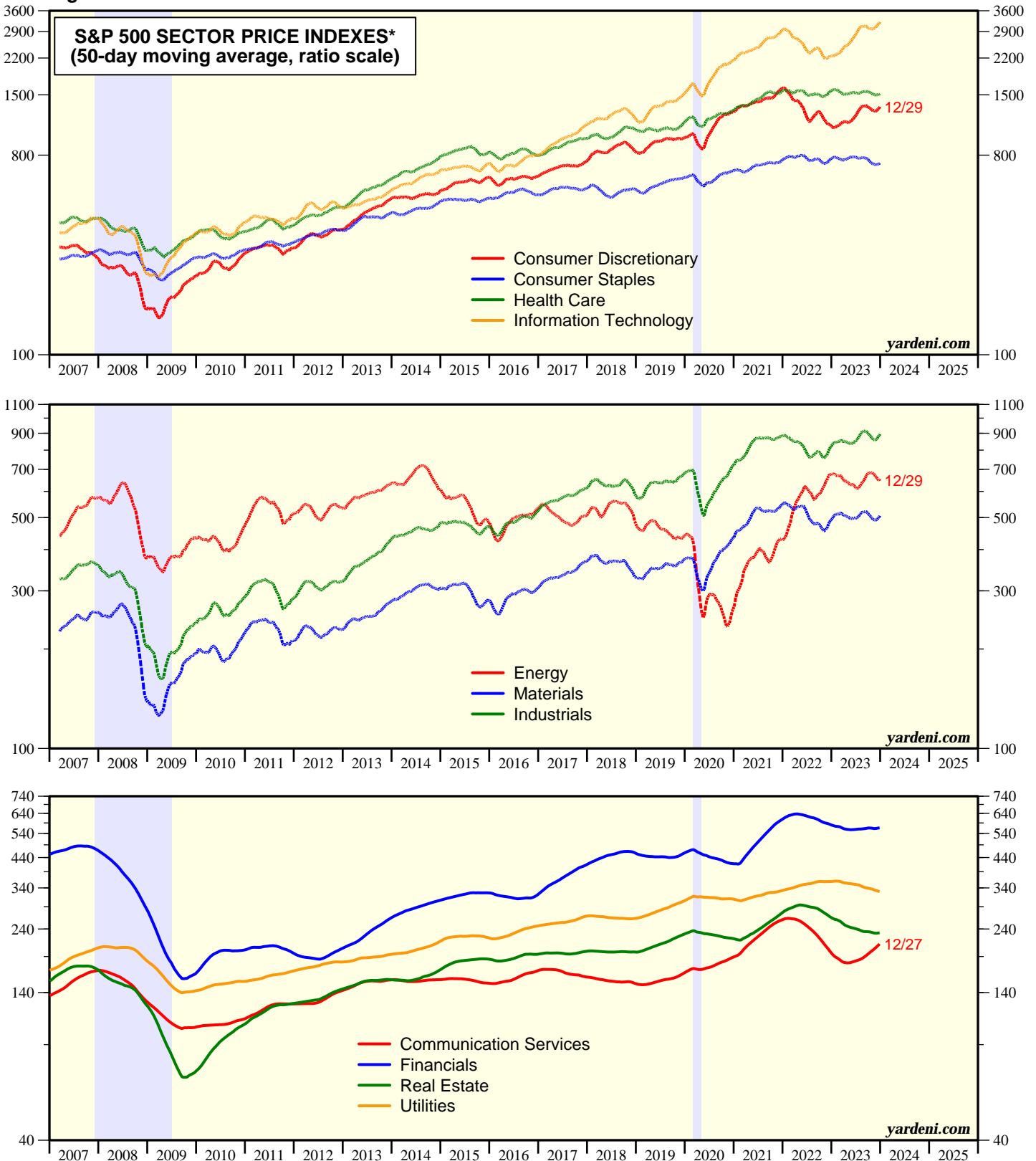
Figure 20.



Source: Standard & Poor's.

200-Day Moving Averages

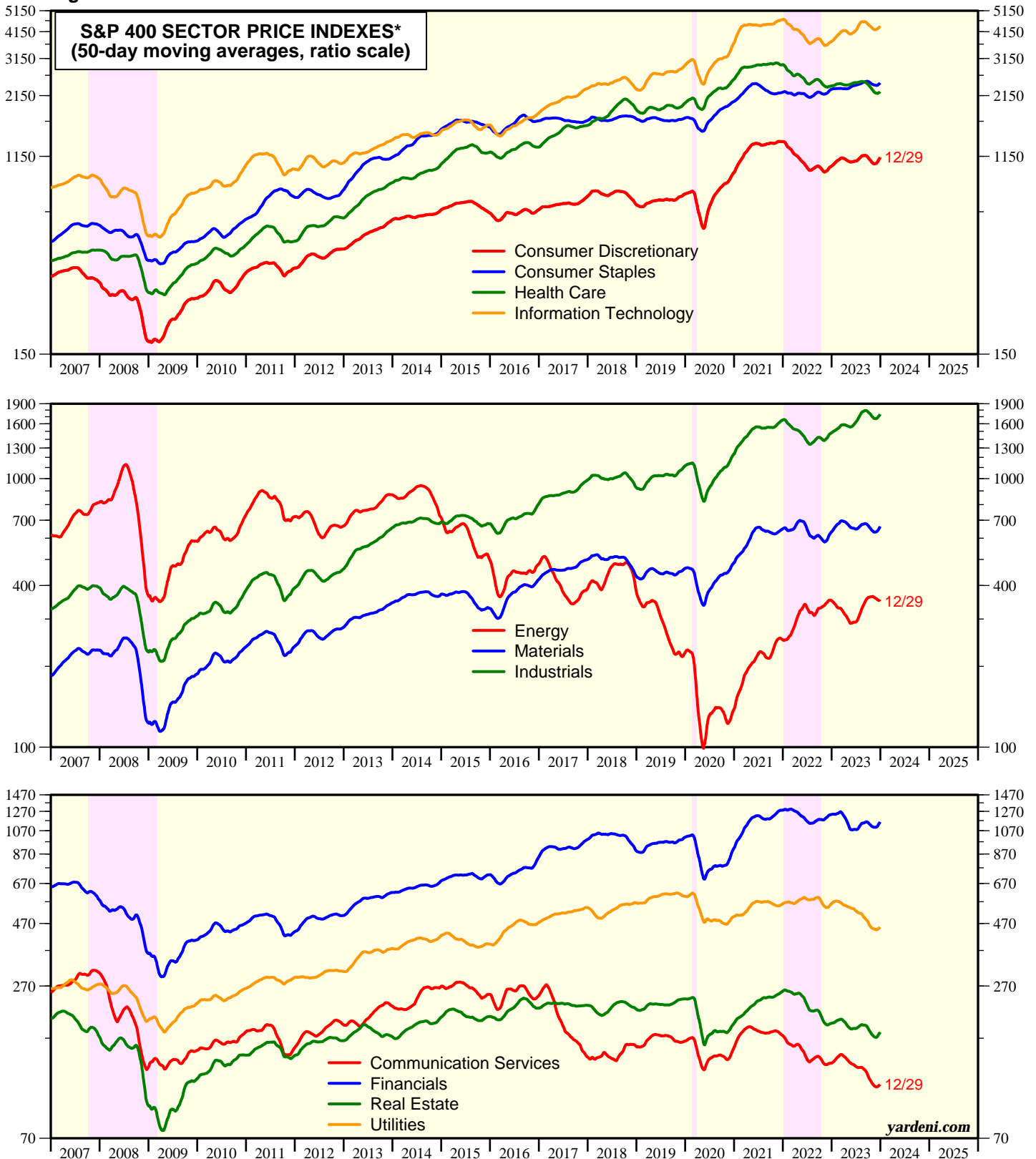
Figure 21.



*S&P 500 sector price indexes on ratio scales.
 Note: Shaded areas are recessions according to the National Bureau of Economic Research.
 Source: Standard & Poor's.

200-Day Moving Averages

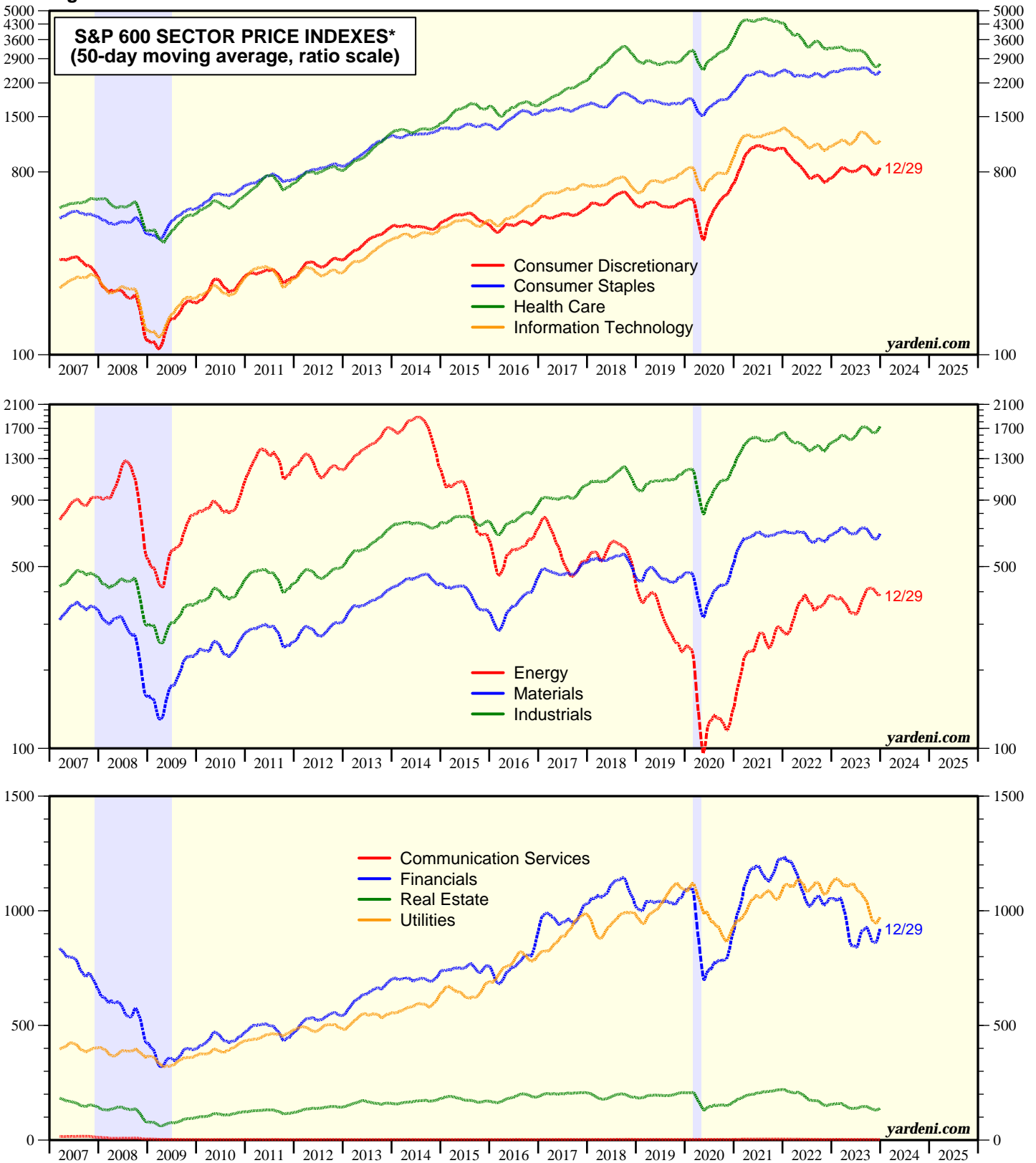
Figure 22.



*S&P 500 sector price indexes on ratio scales.
 Note: Shaded red areas are S&P 500 bear market declines of 20% or more. Yellow areas show bull markets.
 Source: Standard & Poor's.

200-Day Moving Averages

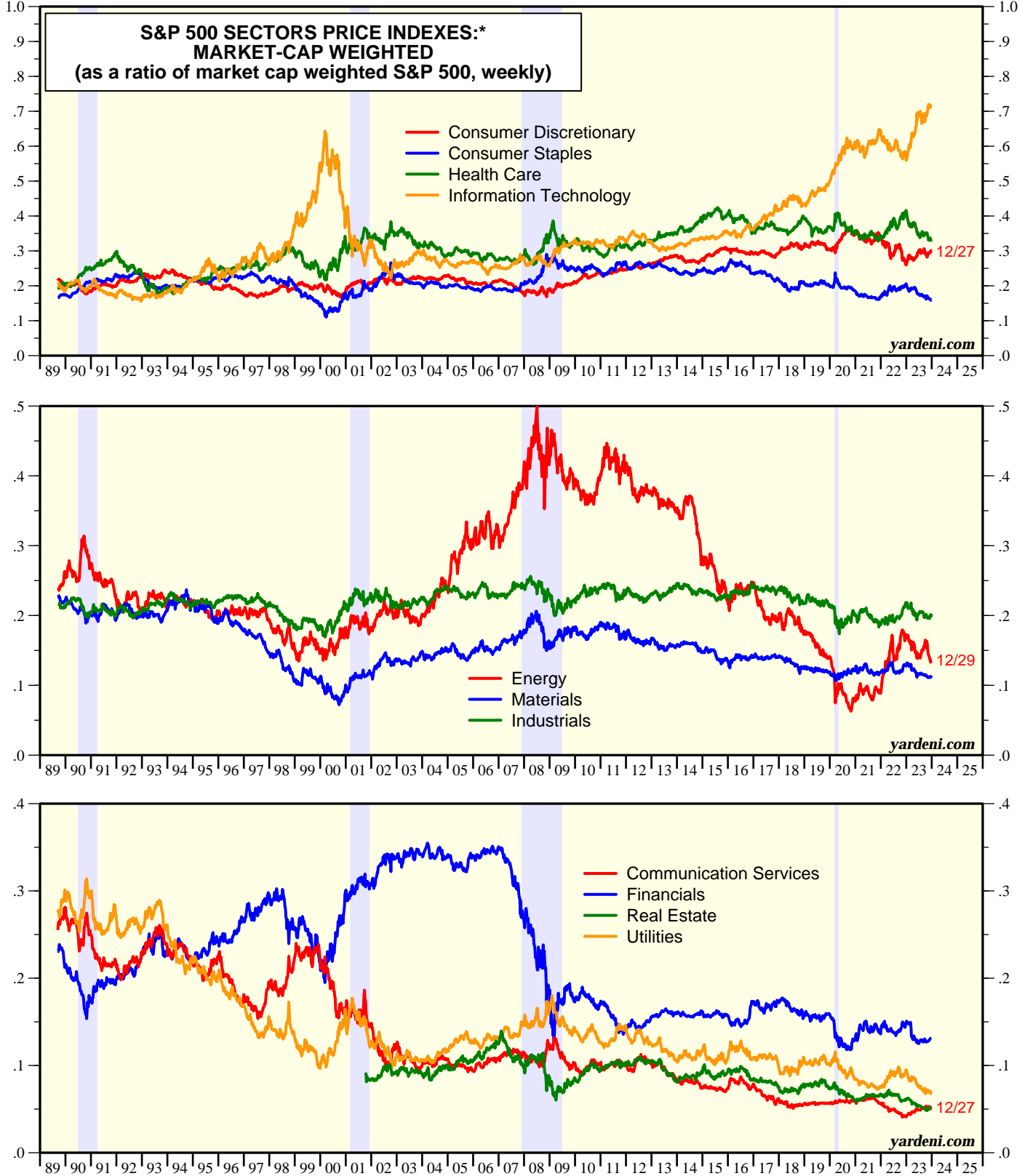
Figure 23.



*S&P 500 sector price indexes on ratio scales.
 Note: Shaded areas are recessions according to the National Bureau of Economic Research.
 Source: Standard & Poor's.

200-Day Moving Averages

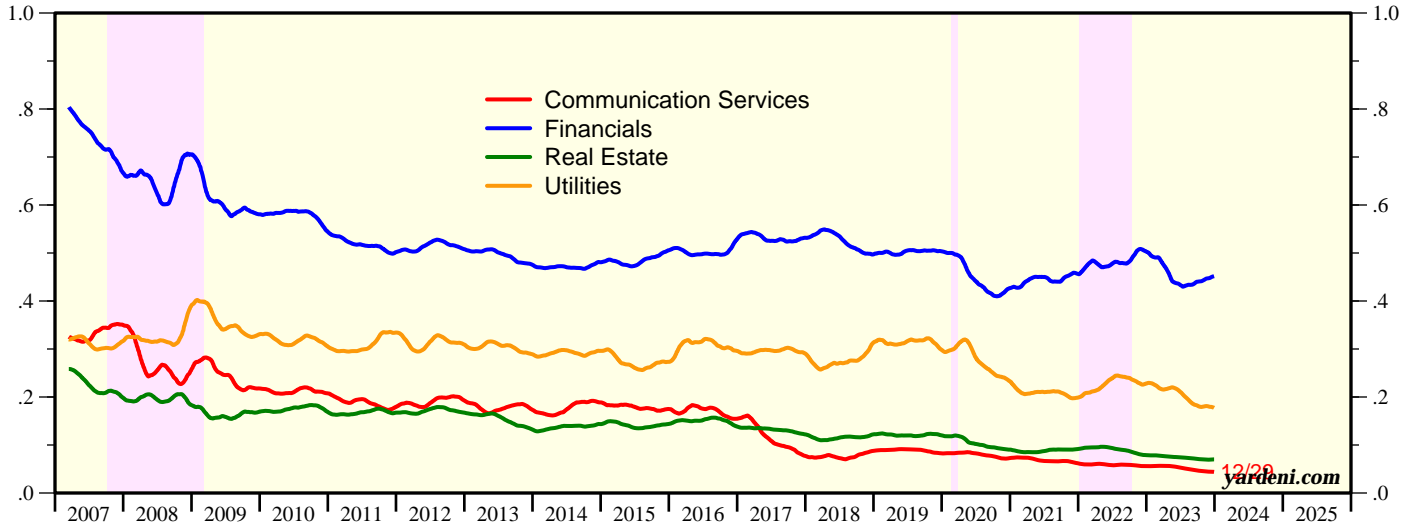
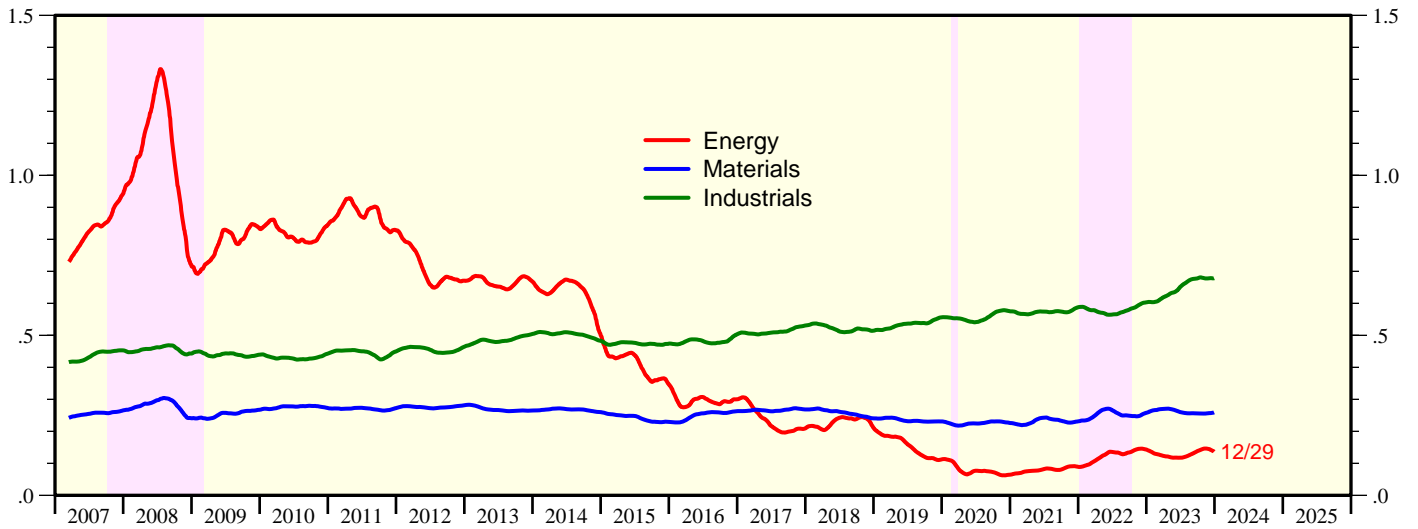
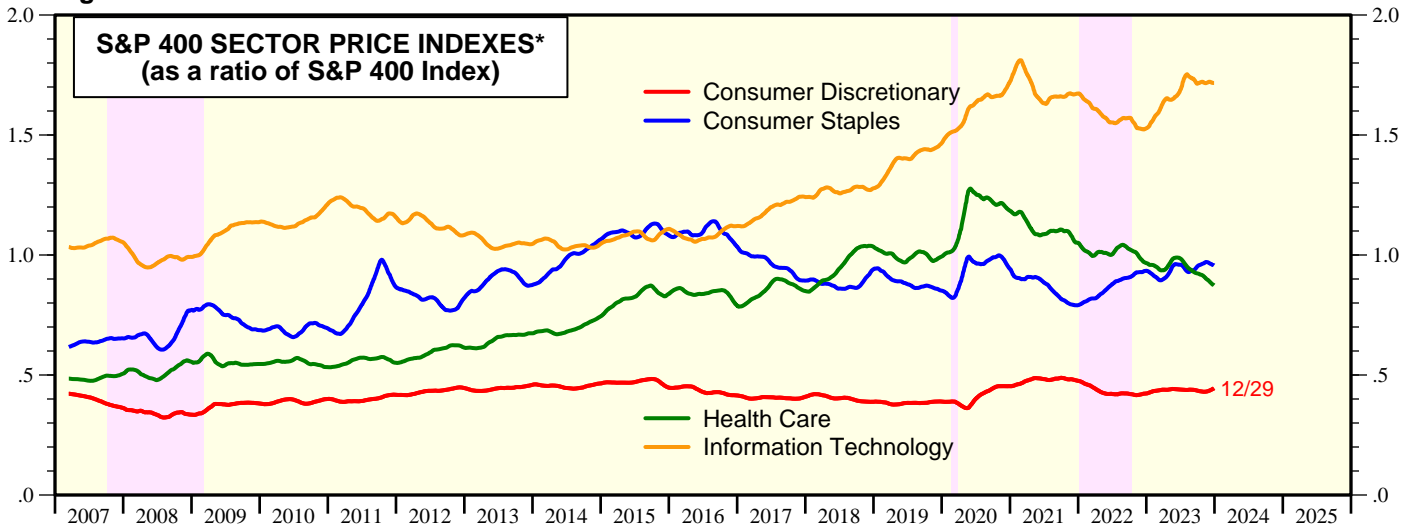
Figure 24.



Note: Shaded areas are recessions according to the National Bureau of Economic Research.
 Source: Standard & Poor's.

200-Day Moving Averages

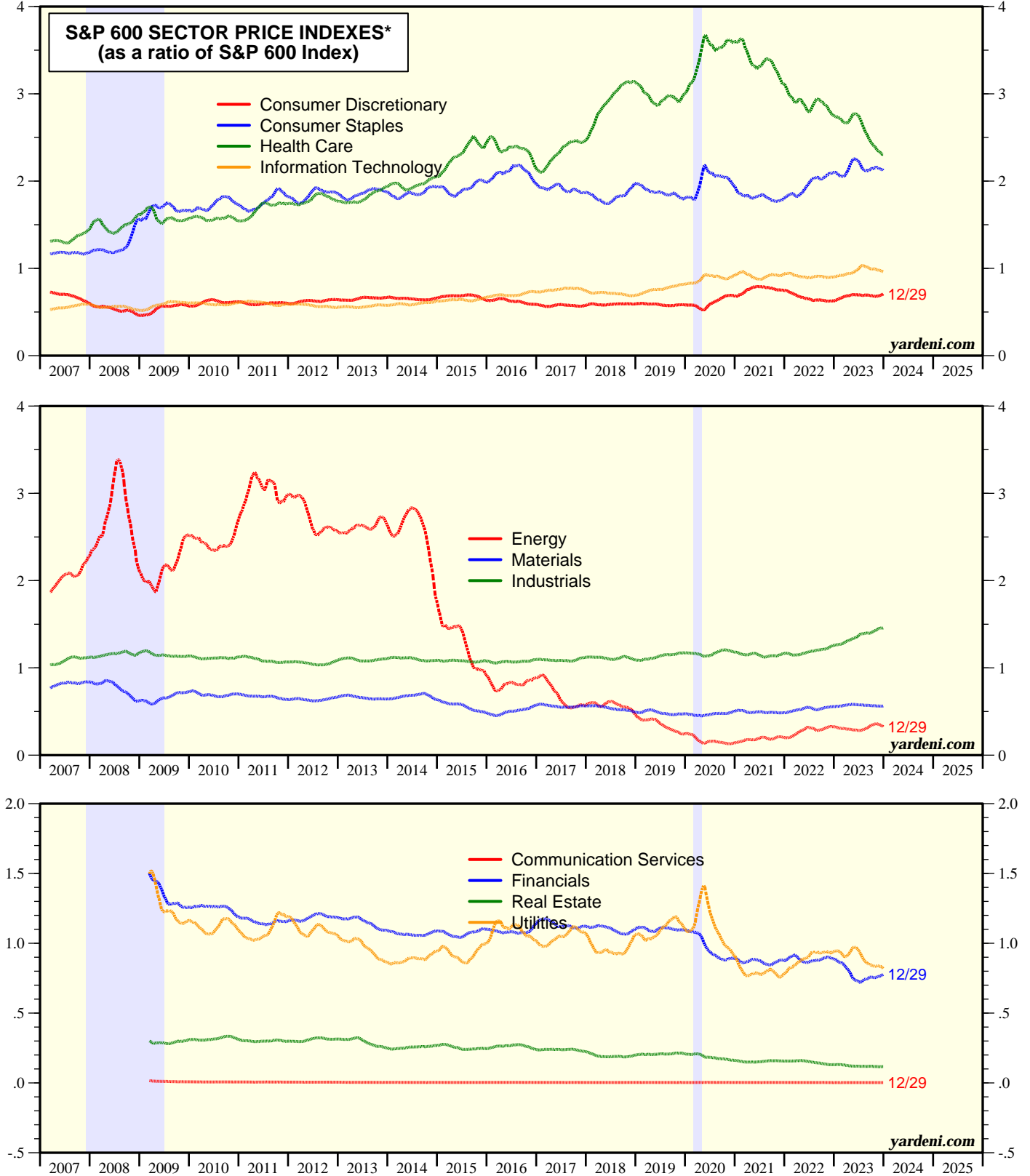
Figure 25.



*50-day moving averages.
 Note: Shaded red areas are S&P 500 bear market declines of 20% or more. Yellow areas show bull markets.
 Source: Standard & Poor's.

200-Day Moving Averages

Figure 26.



*50-day moving averages.
 Note: Shaded areas are recessions according to the National Bureau of Economic Research.
 Source: Standard & Poor's.

Copyright (c) Yardeni Research, Inc. 2023. All rights reserved. The information contained herein has been obtained from sources believed to be reliable, but is not necessarily complete and its accuracy cannot be guaranteed. No representation or warranty, express or implied, is made as to the fairness, accuracy, completeness, or correctness of the information and opinions contained herein. The views and the other information provided are subject to change without notice. All reports and podcasts posted on www.yardeni.com, blog.yardeni.com, and YRI's Apps are issued without regard to the specific investment objectives, financial situation, or particular needs of any specific recipient and are not to be construed as a solicitation or an offer to buy or sell any securities or related financial instruments. Past performance is not necessarily a guide to future results. Company fundamentals and earnings may be mentioned occasionally, but should not be construed as a recommendation to buy, sell, or hold the company's stock. Predictions, forecasts, and estimates for any and all markets should not be construed as recommendations to buy, sell, or hold any security--including mutual funds, futures contracts, and exchange traded funds, or any similar instruments.

The text, images, and other materials contained or displayed on any Yardeni Research, Inc. product, service, report, email or website are proprietary to Yardeni Research, Inc. and constitute valuable intellectual property. No material from any part of www.yardeni.com, blog.yardeni.com, and YRI's Apps may be downloaded, transmitted, broadcast, transferred, assigned, reproduced or in any other way used or otherwise disseminated in any form to any person or entity, without the explicit written consent of Yardeni Research, Inc. All unauthorized reproduction or other use of material from Yardeni Research, Inc. shall be deemed willful infringement(s) of this copyright and other proprietary and intellectual property rights, including but not limited to, rights of privacy. Yardeni Research, Inc. expressly reserves all rights in connection with its intellectual property, including without limitation the right to block the transfer of its products and services and/or to track usage thereof, through electronic tracking technology, and all other lawful means, now known or hereafter devised. Yardeni Research, Inc. reserves the right, without further notice, to pursue to the fullest extent allowed by the law any and all criminal and civil remedies for the violation of its rights.

The recipient should check any email and any attachments for the presence of viruses. Yardeni Research, Inc. accepts no liability for any damage caused by any virus transmitted by this company's emails, website, blog and Apps. Additional information available on [request](#).