

Chart Collection for Morning Briefing

Yardeni Research, Inc.

June 26, 2017

Dr. Edward Yardeni

516-972-7683
eyardeni@yardeni.com

Mali Quintana

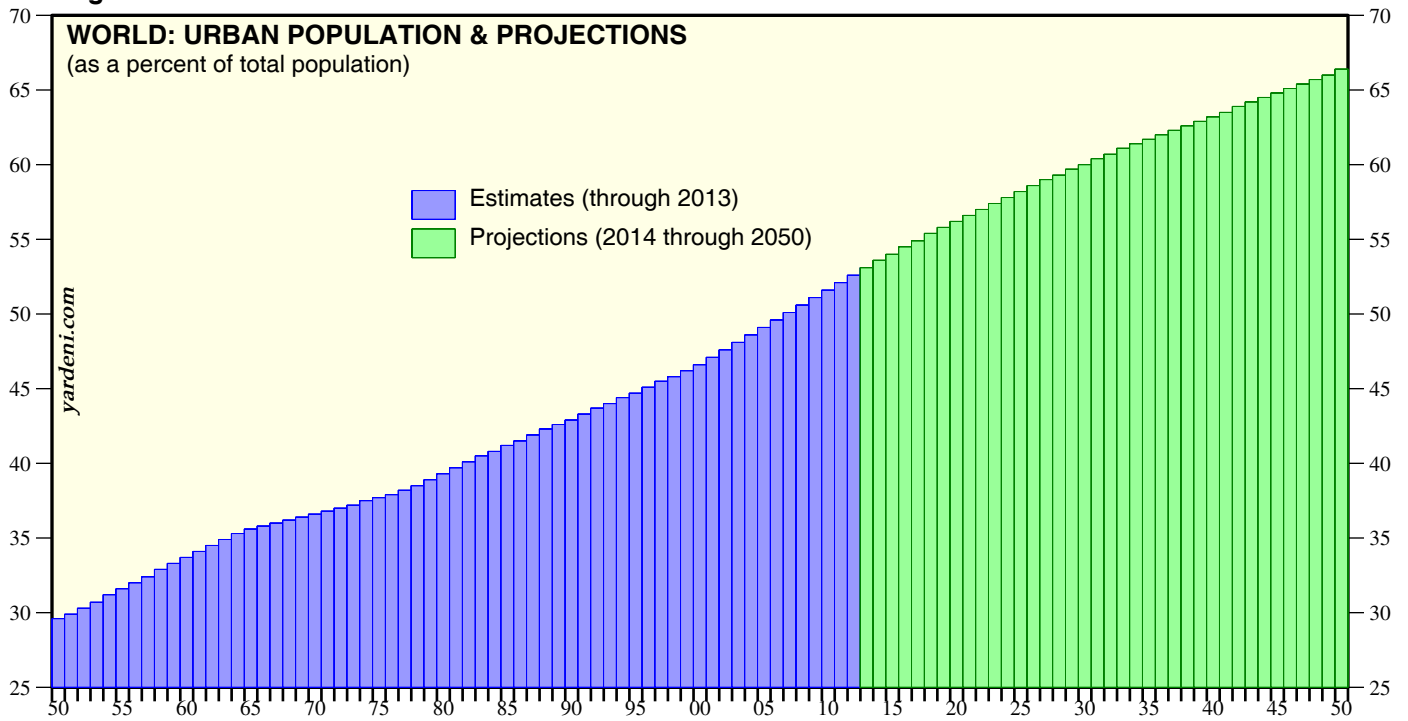
480-664-1333
aquintana@yardeni.com

Please visit our sites at
www.yardeni.com
blog.yardeni.com



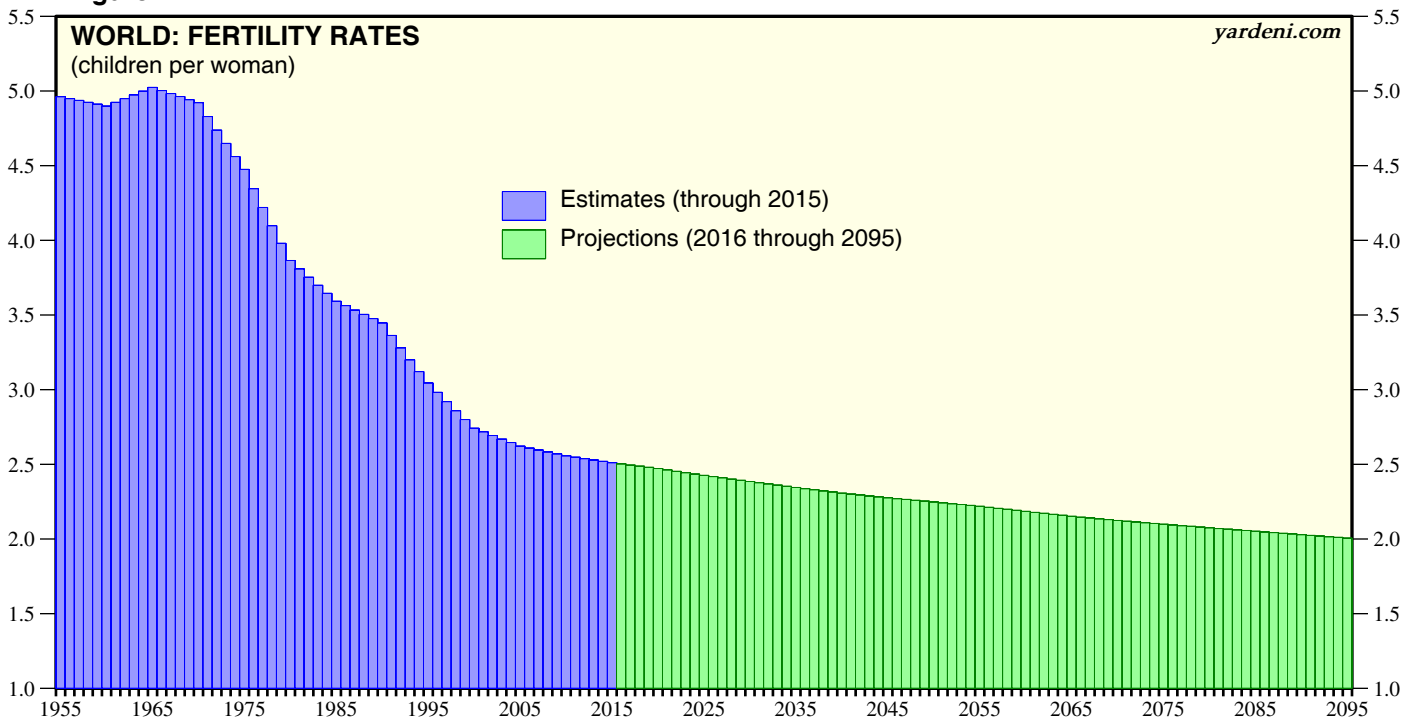
thinking outside the box

Figure 1.



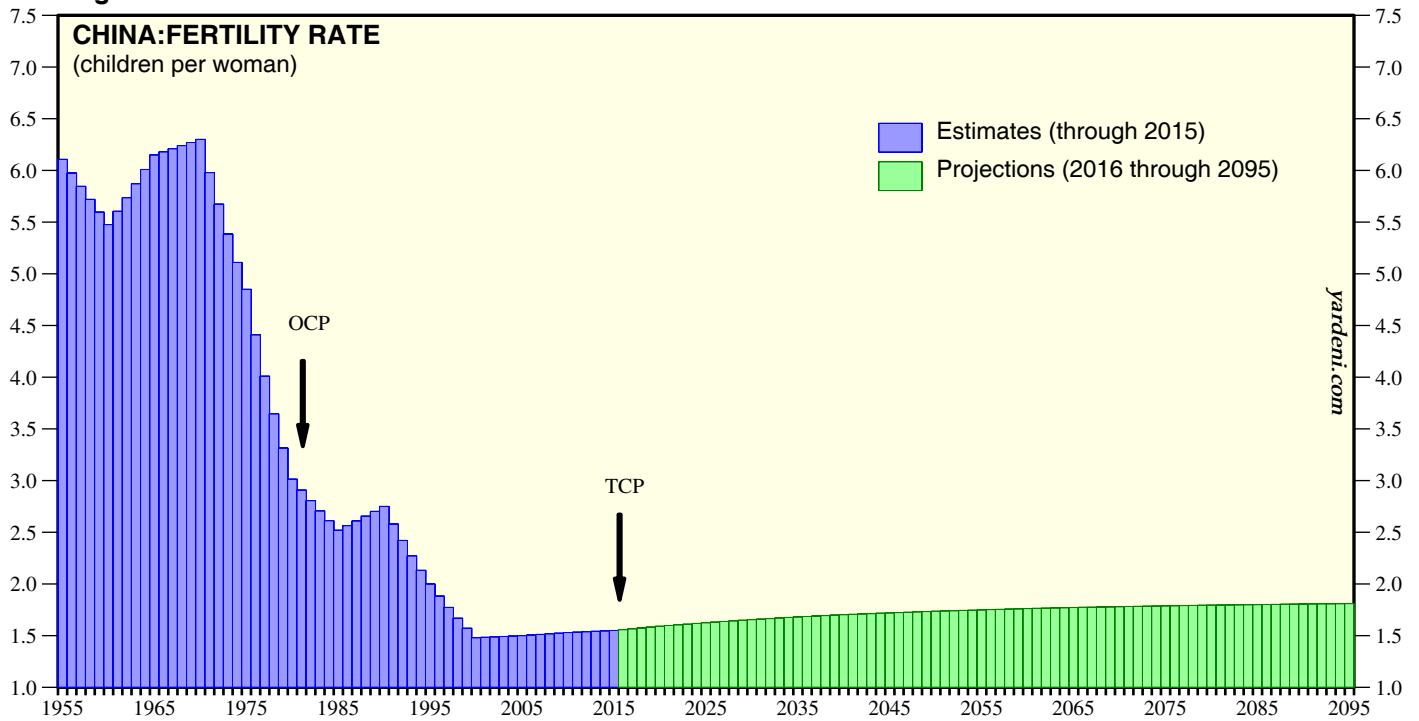
Source: United Nations.

Figure 2.



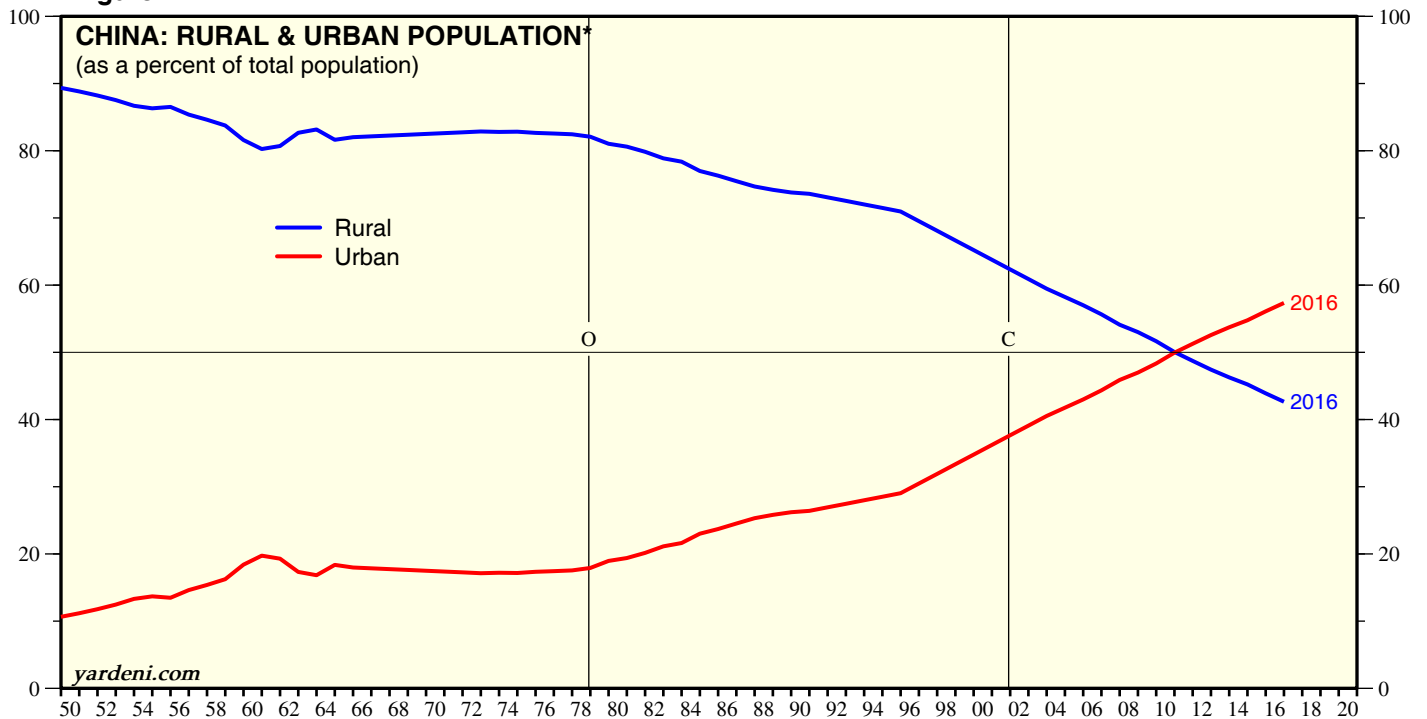
Source: United Nations.

Figure 3.



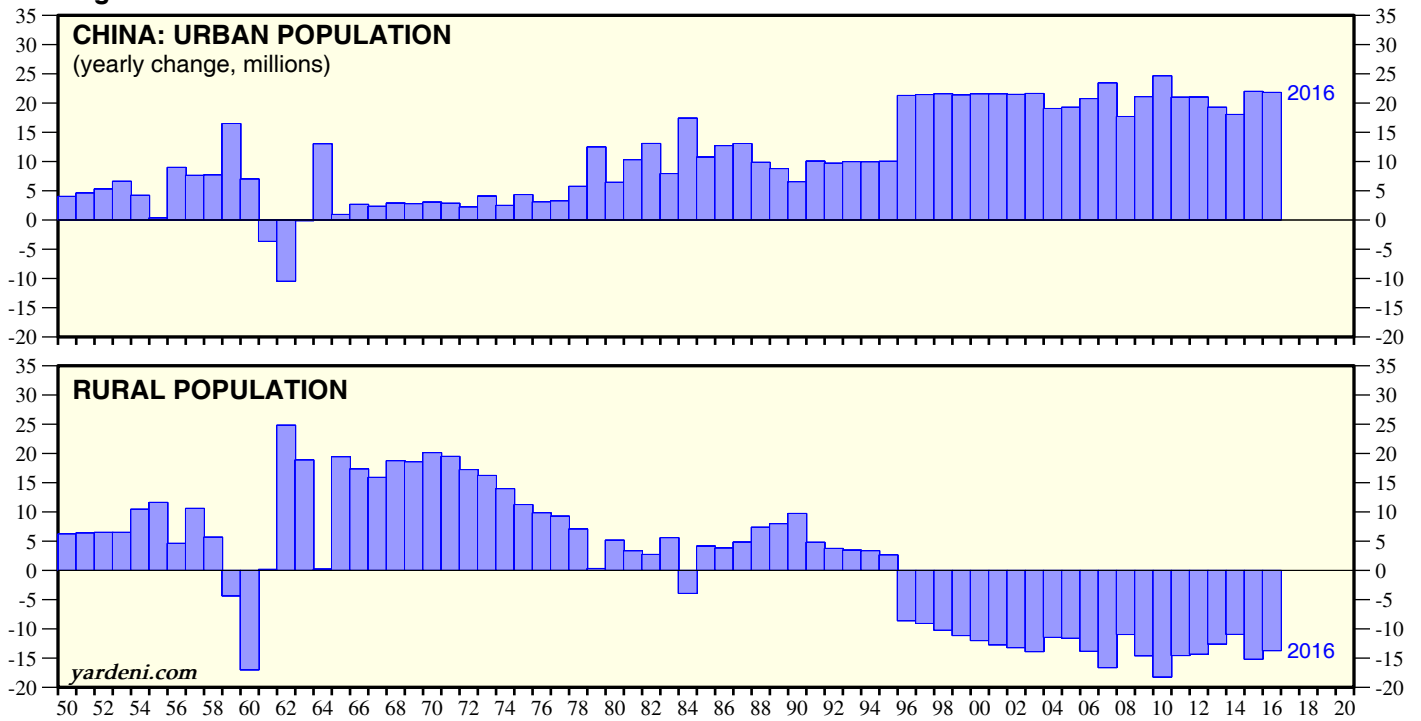
Note: OCP = China officially adopts one-child policy in 1979. TCP = China officially adopts two-child policy in 2016.
 Source: China National Bureau of Statistics.

Figure 4.



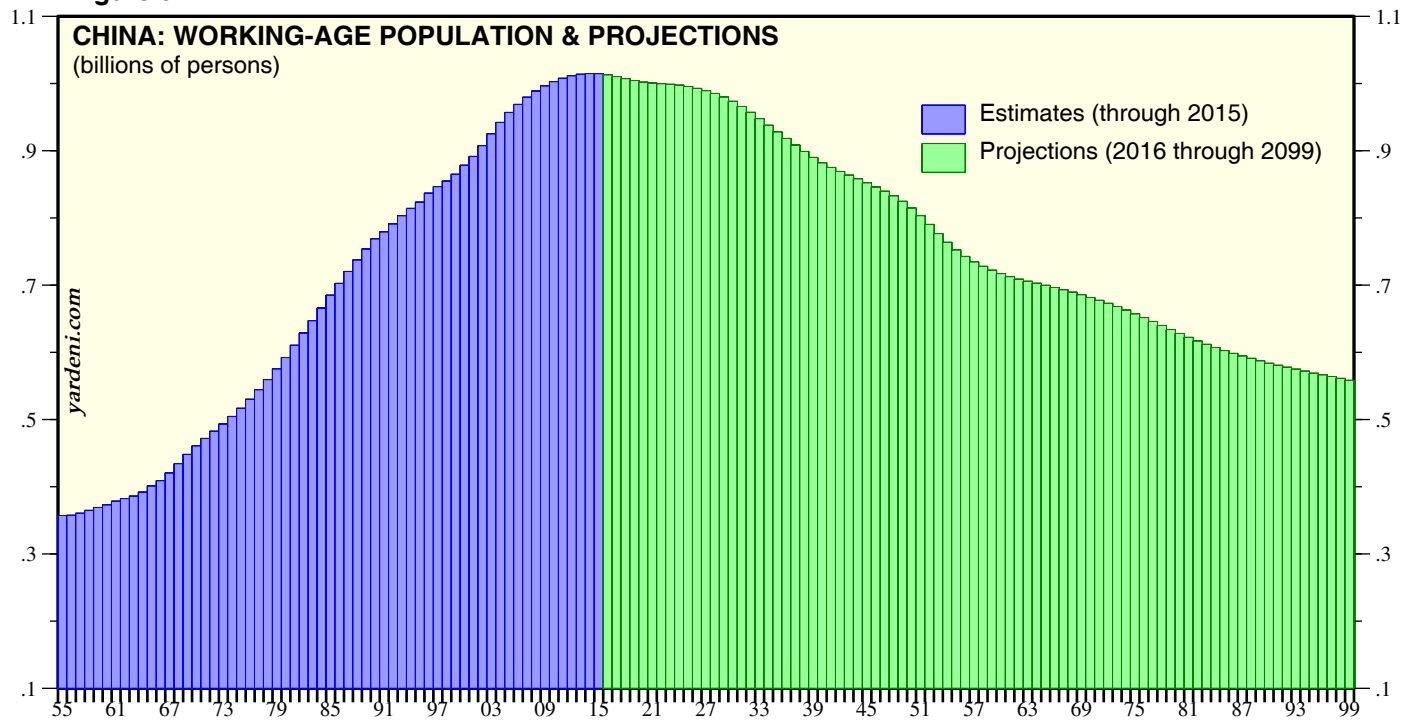
Note: O = China announced Open Door Policy during December 1978. C = China joined World Trade Organization during December 2001.
 * Estimates through 2015, projections from 2016 through 2095.
 Source: China National Bureau of Statistics.

Figure 5.



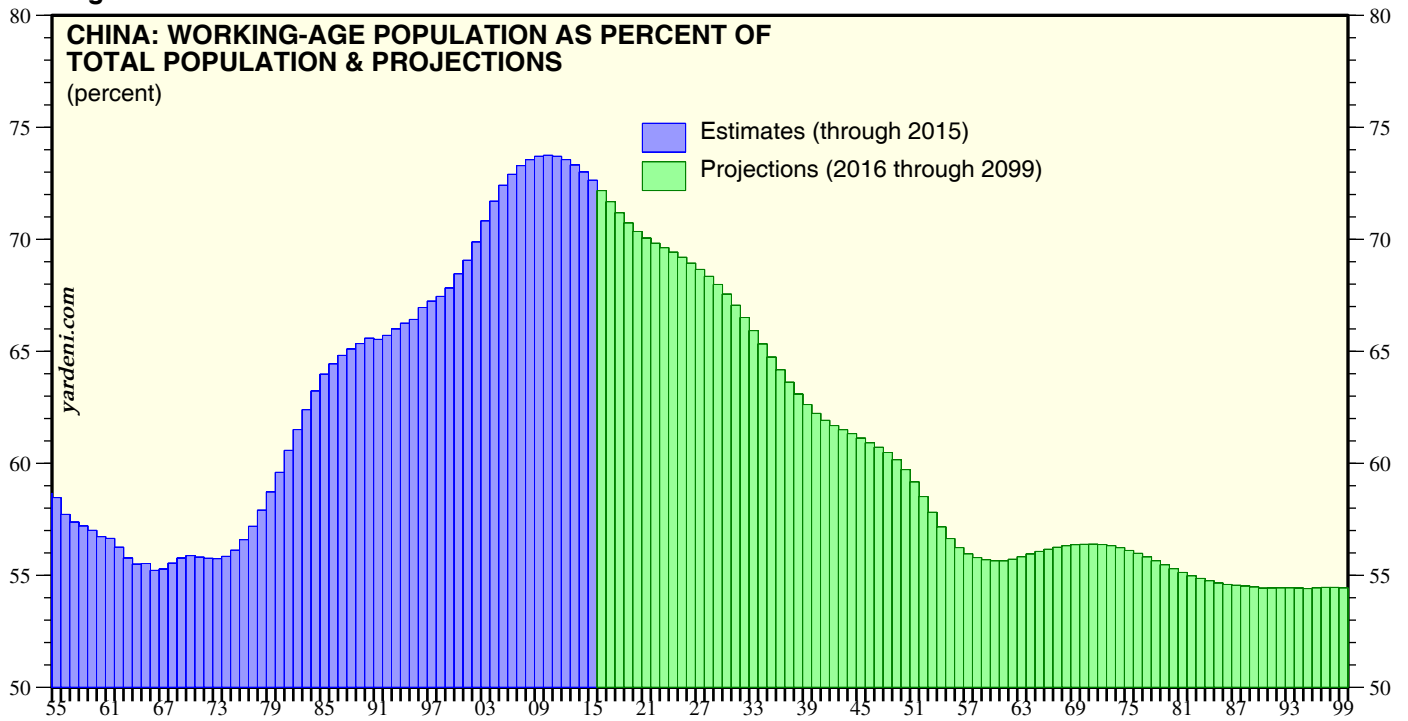
Source: United Nations.

Figure 6.



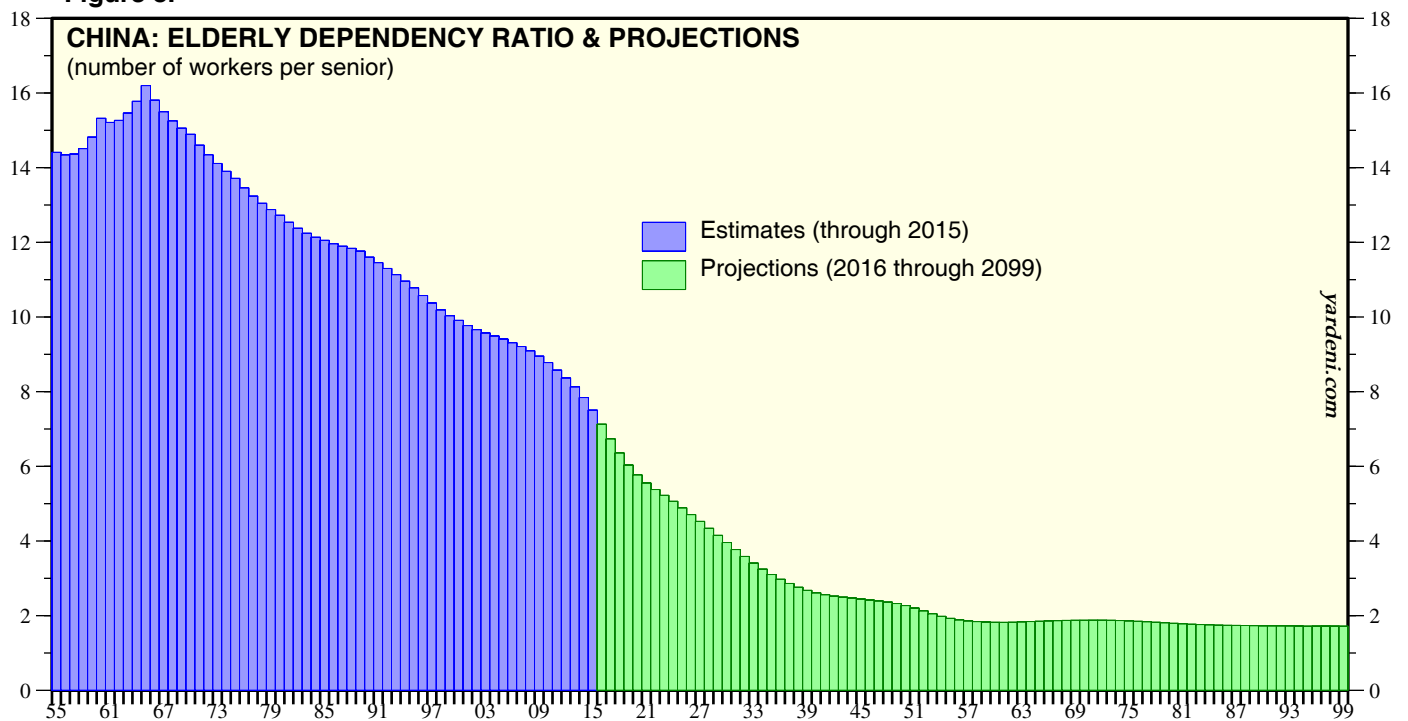
Source: United Nations.

Figure 7.



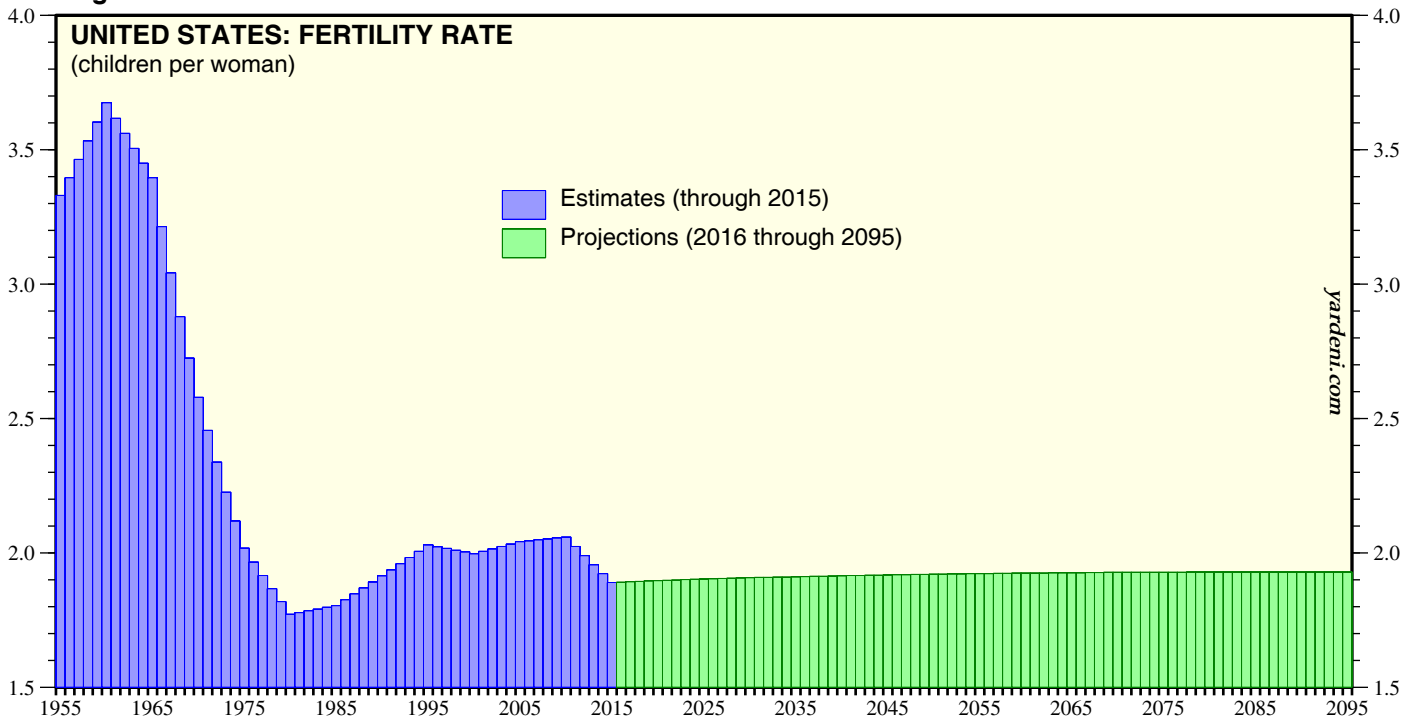
Source: United Nations.

Figure 8.



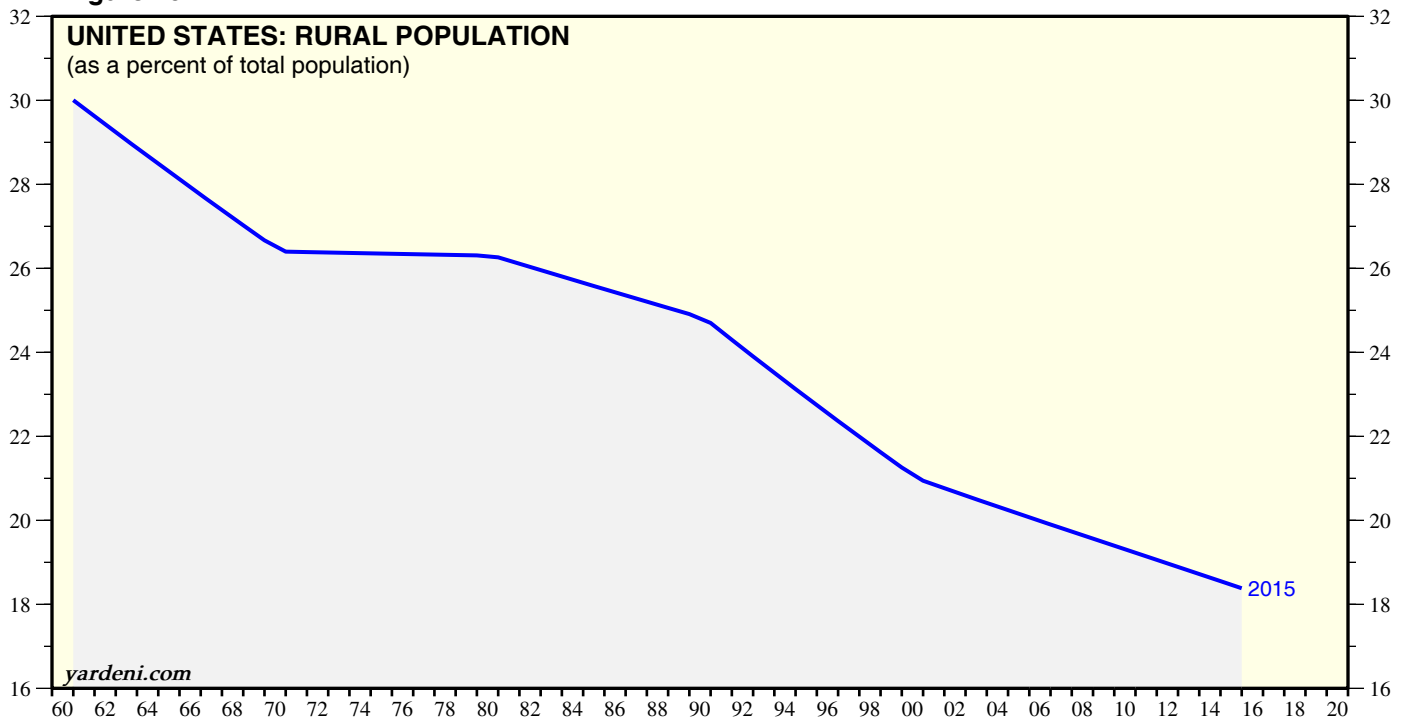
Source: United Nations.

Figure 9.



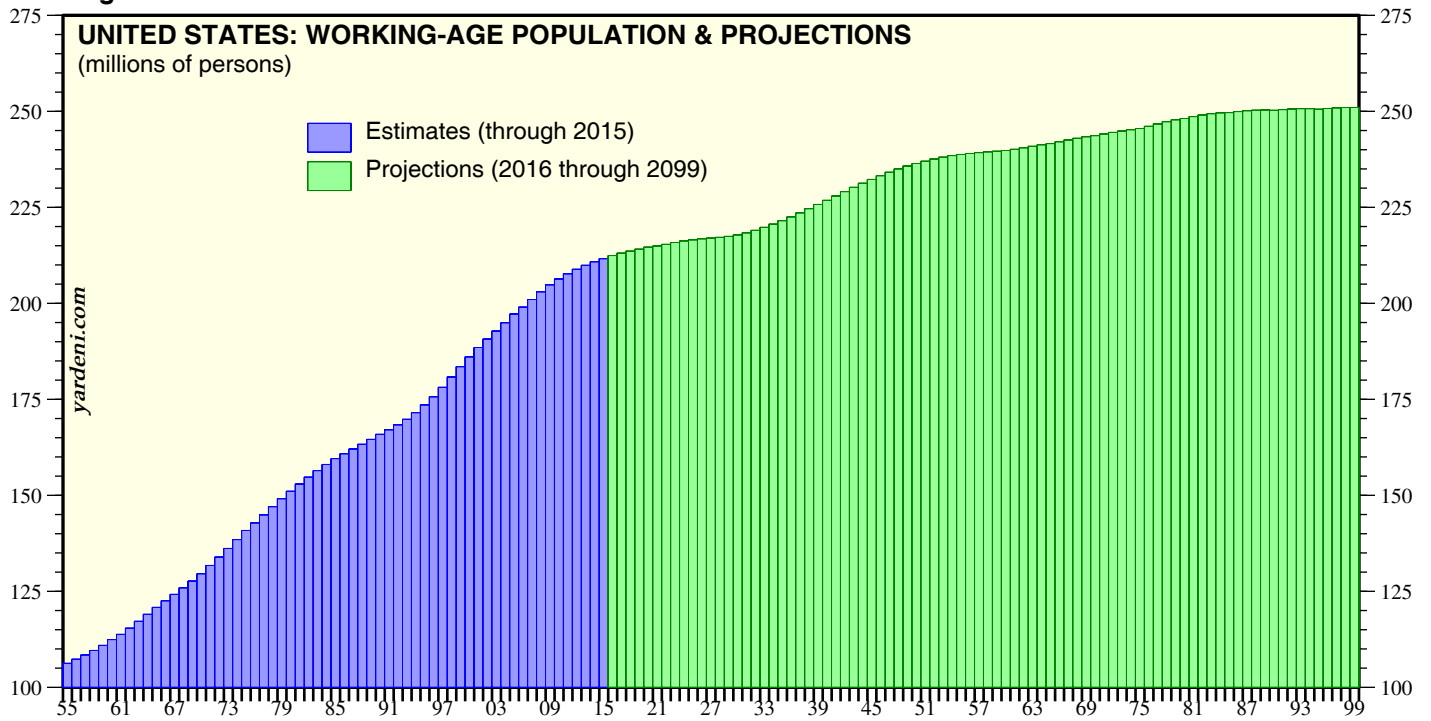
Source: United Nations.

Figure 10.



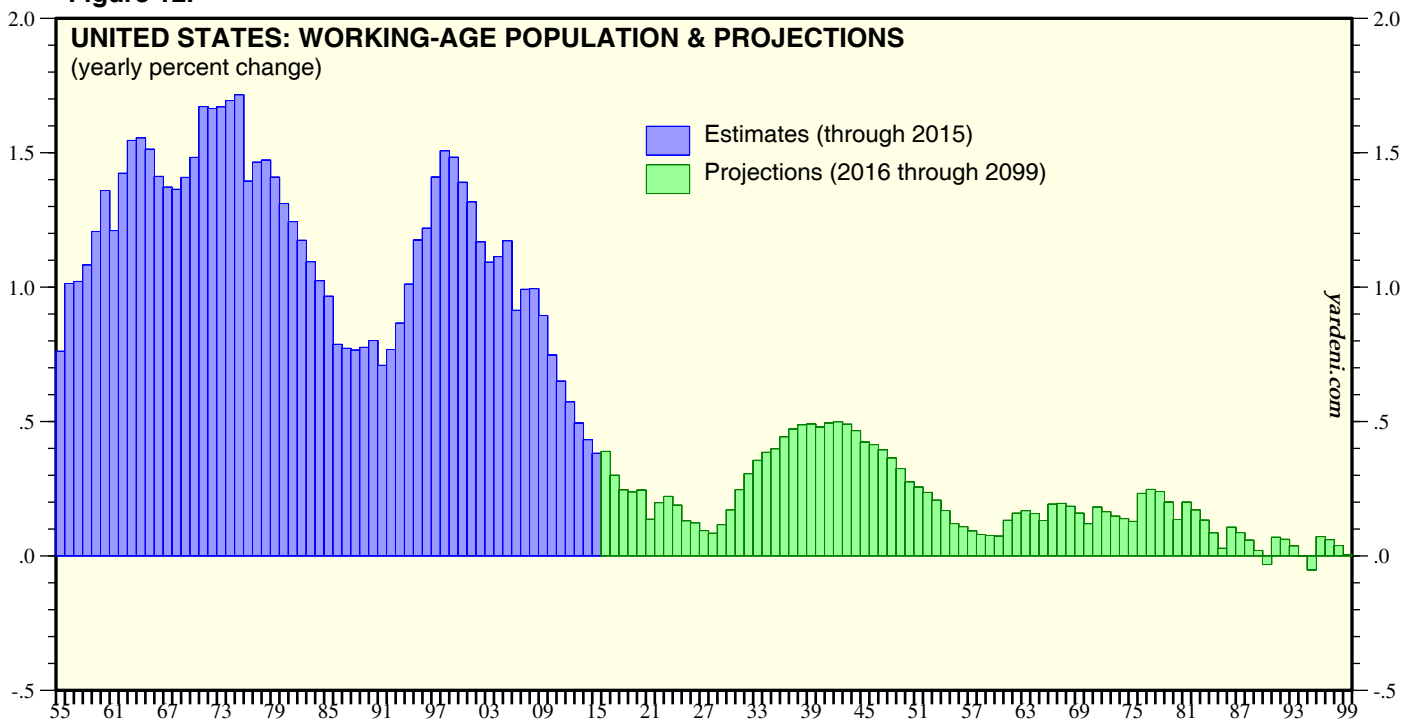
Source: The World Bank.

Figure 11.



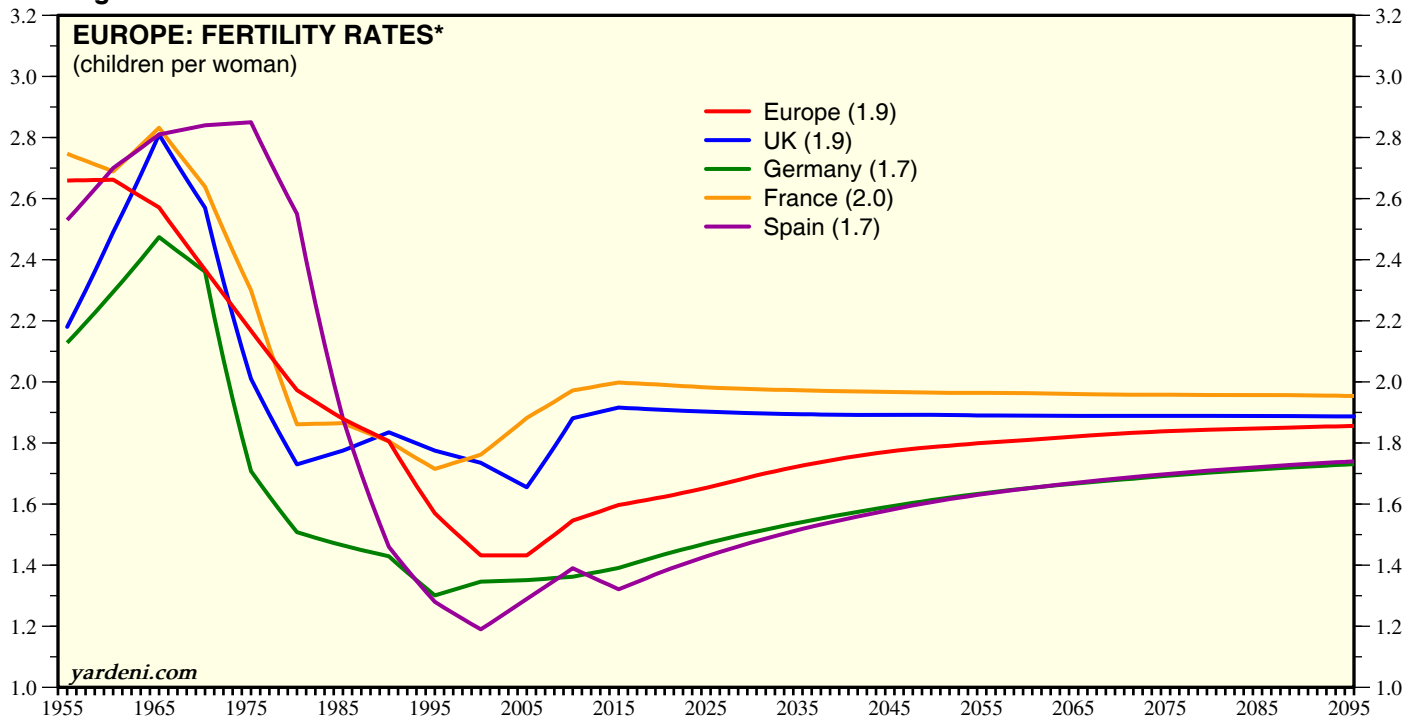
Source: United Nations.

Figure 12.



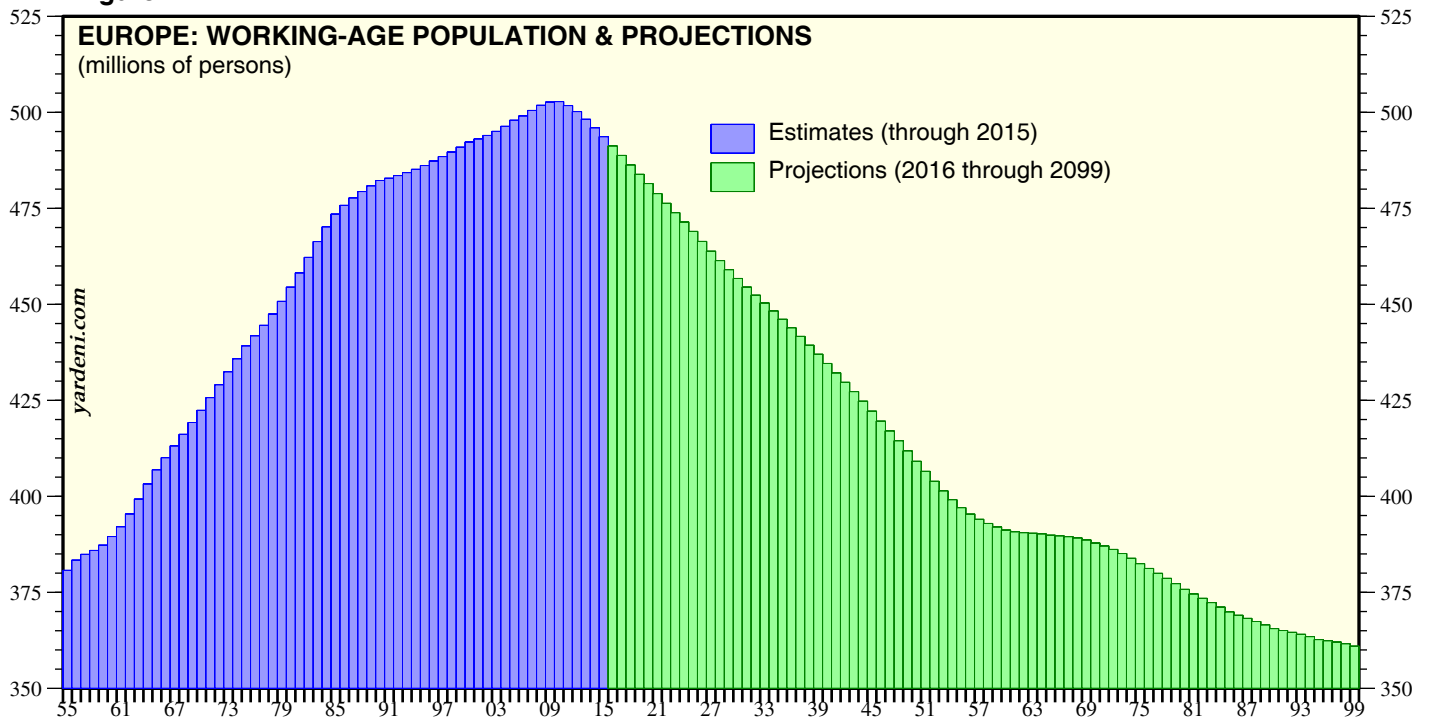
Source: United Nations.

Figure 13.



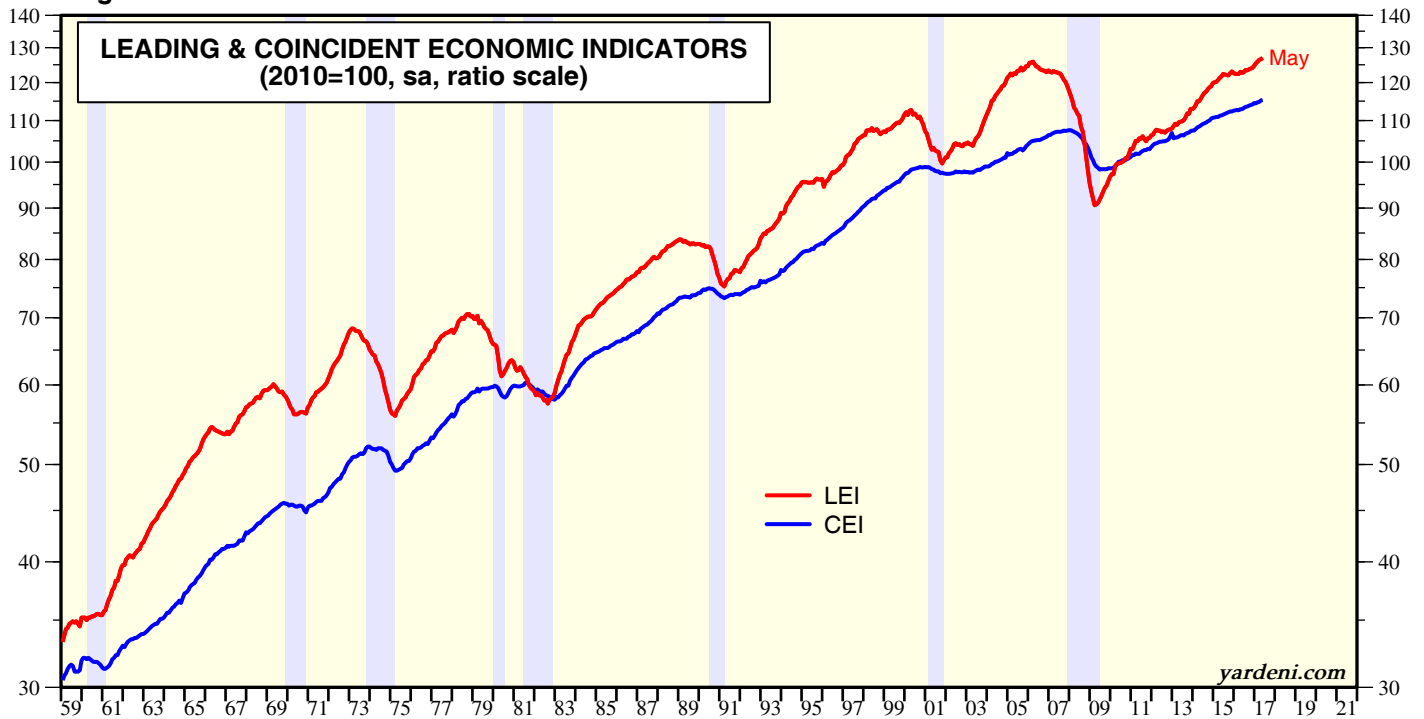
* Estimates through 2015, projections from 2016 through 2095.
Source: United Nations.

Figure 14.



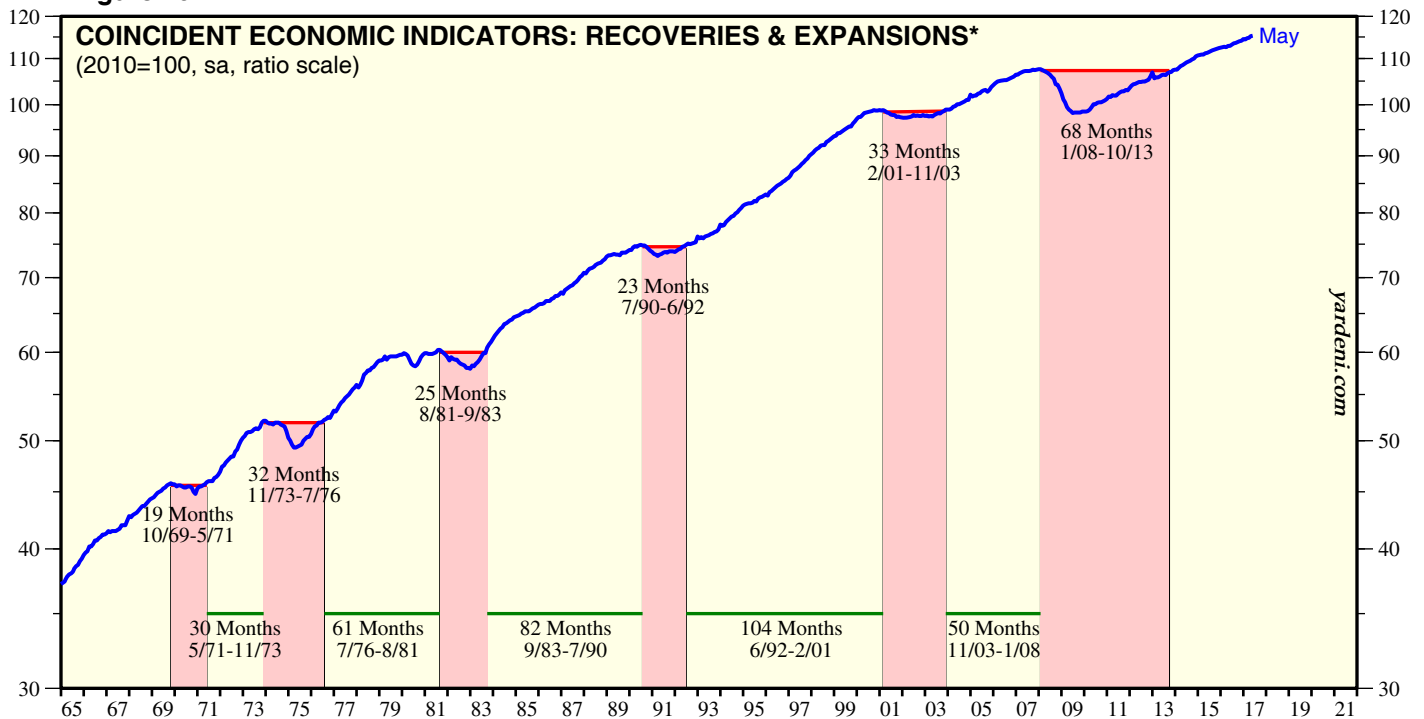
Source: United Nations.

Figure 15.



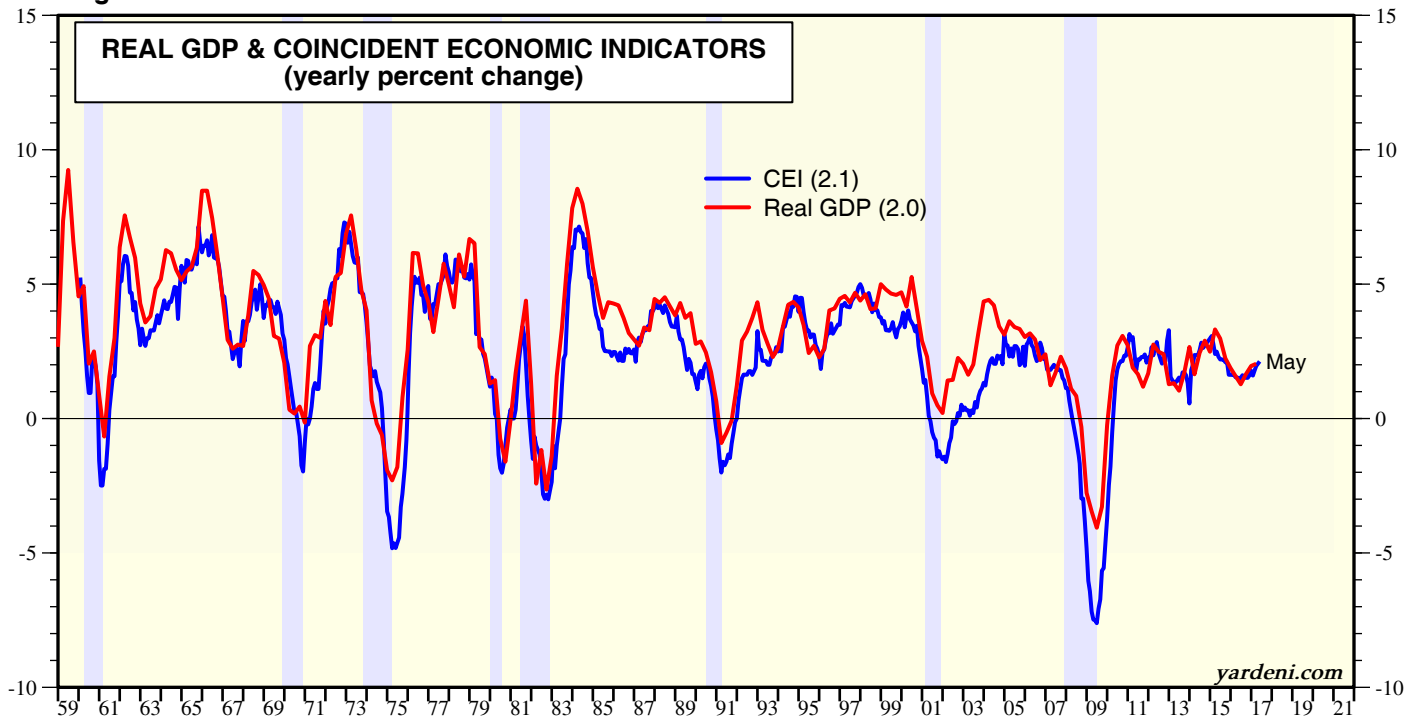
Note: Shaded areas denote recessions according to the National Bureau of Economic Research.
 Source: Conference Board.

Figure 16.



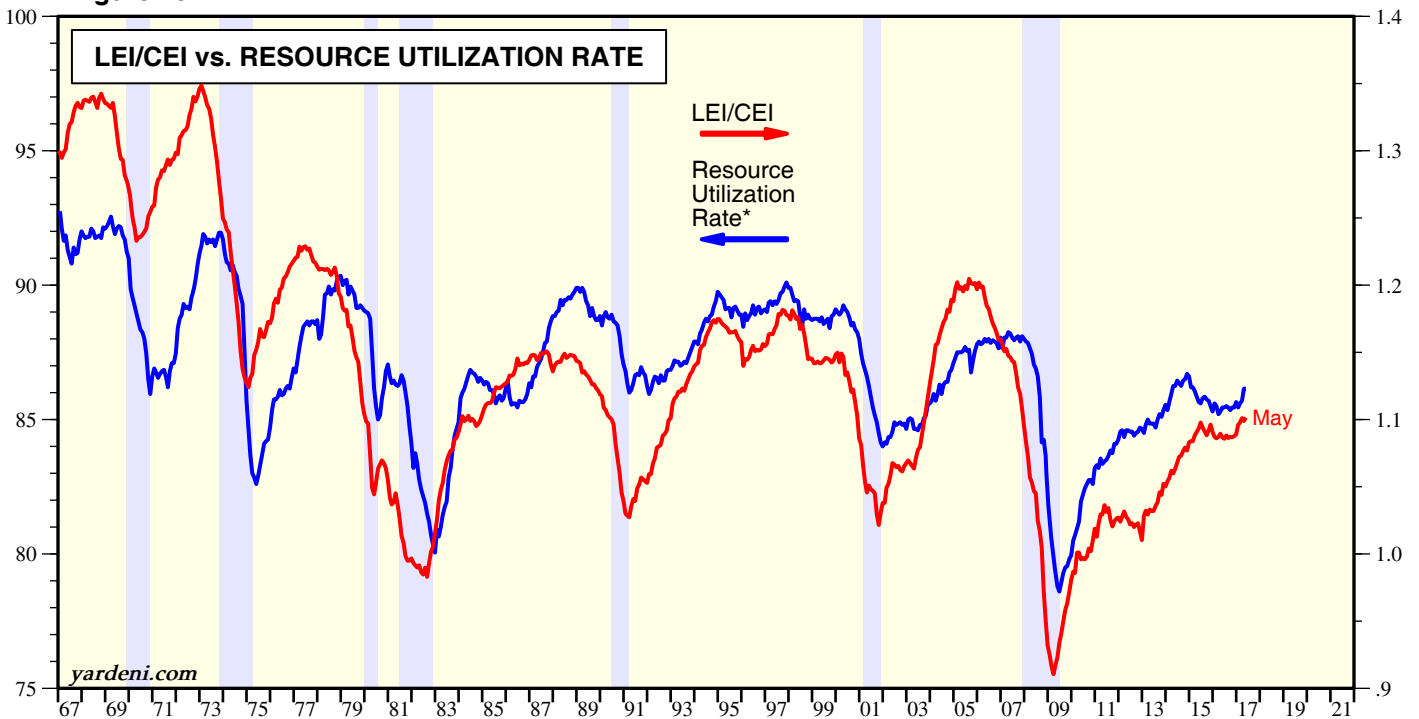
* Red horizontal lines span cyclical peaks through subsequent cyclical recoveries. Green horizontal lines are expansion periods following recoveries.
 Source: Conference Board, Haver Analytics, and YRI calculations.

Figure 17.



Note: Shaded areas denote recessions according to the National Bureau of Economic Research.
 Source: Bureau of Economic Analysis and Conference Board.

Figure 18.



* Average of all industries' capacity utilization rate and employment rate, i.e., percentage of labor force that is employed.
 Note: Shaded areas denote recessions according to the National Bureau of Economic Research.
 Source: Bureau of Economic Analysis, Bureau of Labor Statistics, Federal Reserve Board, and Conference Board.